

Product datasheet for **TA314187**

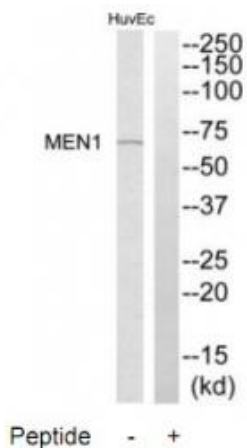
Menin (MEN1) Rabbit Polyclonal Antibody

Product data:

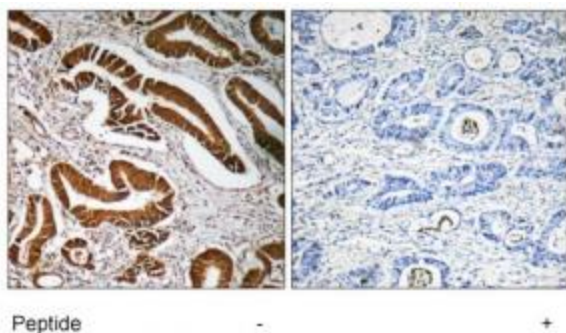
Product Type:	Primary Antibodies
Applications:	IHC, WB
Recommended Dilution:	WB: 1:500~1:3000, IHC: 1:50~1:100, ELISA: 1:20000
Reactivity:	Human, Mouse, Rat
Host:	Rabbit
Isotype:	IgG
Clonality:	Polyclonal
Immunogen:	The antiserum was produced against synthesized peptide derived from internal of human MEN1.
Formulation:	Phosphate buffered saline (without Mg ²⁺ and Ca ²⁺), pH 7.4, 150mM NaCl, 0.02% sodium azide and 50% glycerol.
Concentration:	lot specific
Purification:	The antibody was affinity-purified from rabbit antiserum by affinity-chromatography using epitope-specific immunogen.
Conjugation:	Unconjugated
Storage:	Store at -20°C as received.
Stability:	Stable for 12 months from date of receipt.
Gene Name:	menin 1
Database Link:	NP_000235 Entrez Gene 17283 Mouse Entrez Gene 29417 Rat Entrez Gene 4221 Human O00255
Synonyms:	MEAI; SCG2
Note:	MEN1 antibody detects endogenous levels of total MEN1 protein.
Protein Families:	Druggable Genome, Transcription Factors



[View online »](#)

Product images:


Western blot analysis of extracts from HuvEc cells, using MEN1 antibody. The lane on the right is treated with the synthesized peptide.



Immunohistochemistry analysis of paraffin-embedded human colon carcinoma tissue, using MEN1 antibody. The picture on the right is treated with the synthesized peptide.