

## Product datasheet for **TA314185**

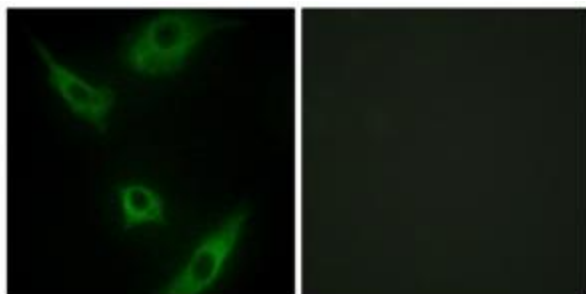
### MEKK1 (MAP3K1) Rabbit Polyclonal Antibody

#### Product data:

Product Type:	Primary Antibodies
Applications:	IF
Recommended Dilution:	IF: 1:100~1:500, ELISA: 1:5000
Reactivity:	Human, Mouse, Rat
Host:	Rabbit
Isotype:	IgG
Clonality:	Polyclonal
Immunogen:	The antiserum was produced against synthesized peptide derived from internal of human MAP3K1.
Formulation:	Phosphate buffered saline (without Mg <sup>2+</sup> and Ca <sup>2+</sup> ), pH 7.4, 150mM NaCl, 0.02% sodium azide and 50% glycerol.
Concentration:	lot specific
Purification:	The antibody was affinity-purified from rabbit antiserum by affinity-chromatography using epitope-specific immunogen.
Conjugation:	Unconjugated
Storage:	Store at -20°C as received.
Stability:	Stable for 12 months from date of receipt.
Gene Name:	mitogen-activated protein kinase kinase kinase 1
Database Link:	<a href="#">NP_005912</a> <a href="#">Entrez Gene 26401 MouseEntrez Gene 116667 RatEntrez Gene 4214 Human Q13233</a>
Synonyms:	MAPKKK1; MEKK; MEKK 1; MEKK1; SRXY6
Note:	MAP3K1 antibody detects endogenous levels of total MAP3K1 protein.
Protein Families:	Druggable Genome, Protein Kinase
Protein Pathways:	GnRH signaling pathway, MAPK signaling pathway, Neurotrophin signaling pathway, RIG-I-like receptor signaling pathway, Ubiquitin mediated proteolysis



[View online »](#)

**Product images:**

Immunofluorescence analysis of HeLa cells, using MAP3K1 antibody. The picture on the right is treated with the synthesized peptide.