

Product datasheet for **TA314171**

c Maf (MAF) Rabbit Polyclonal Antibody

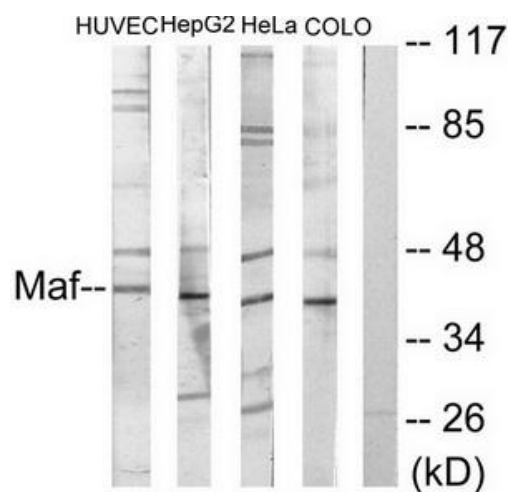
Product data:

Product Type:	Primary Antibodies
Applications:	WB
Recommended Dilution:	WB: 1:500~1:3000, ELISA: 1:10000
Reactivity:	Human, Mouse, Rat
Host:	Rabbit
Isotype:	IgG
Clonality:	Polyclonal
Immunogen:	The antiserum was produced against synthesized peptide derived from Internal of human Maf.
Formulation:	Phosphate buffered saline (without Mg ²⁺ and Ca ²⁺), pH 7.4, 150mM NaCl, 0.02% sodium azide and 50% glycerol.
Concentration:	lot specific
Purification:	The antibody was affinity-purified from rabbit antiserum by affinity-chromatography using epitope-specific immunogen.
Conjugation:	Unconjugated
Storage:	Store at -20°C as received.
Stability:	Stable for 12 months from date of receipt.
Gene Name:	MAF bZIP transcription factor
Database Link:	NP_001026974 Entrez Gene 17132 MouseEntrez Gene 54267 RatEntrez Gene 4094 Human O75444
Synonyms:	c-MAF; CCA4; CTRCT21
Note:	Maf antibody detects endogenous levels of total Maf protein.
Protein Families:	Druggable Genome, Transcription Factors



[View online »](#)

Product images:



Western blot analysis of extracts from HuvEc cells, HepG2 cells, HeLa cells and COLO205 cells, using Maf antibody. The lane on the right is treated with the synthesized peptide.