

Product datasheet for **TA314164**

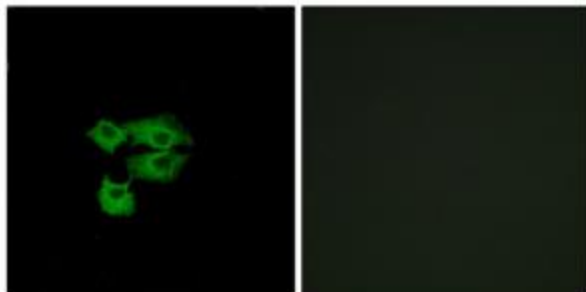
LY6E Rabbit Polyclonal Antibody

Product data:

Product Type:	Primary Antibodies
Applications:	IF
Recommended Dilution:	IF: 1:100~1:500, ELISA: 1:20000
Reactivity:	Human
Host:	Rabbit
Isotype:	IgG
Clonality:	Polyclonal
Immunogen:	The antiserum was produced against synthesized peptide derived from internal of human LY6E.
Formulation:	Phosphate buffered saline (without Mg ²⁺ and Ca ²⁺), pH 7.4, 150mM NaCl, 0.02% sodium azide and 50% glycerol.
Concentration:	lot specific
Purification:	The antibody was affinity-purified from rabbit antiserum by affinity-chromatography using epitope-specific immunogen.
Conjugation:	Unconjugated
Storage:	Store at -20°C as received.
Stability:	Stable for 12 months from date of receipt.
Gene Name:	lymphocyte antigen 6 complex, locus E
Database Link:	NP_002337 Entrez Gene 4061 Human Q16553
Synonyms:	RIG-E; RIGE; SCA-2; SCA2; TSA-1
Note:	LY6E antibody detects endogenous levels of total LY6E protein.



[View online »](#)

Product images:

Immunofluorescence analysis of A549 cells, using LY6E antibody. The picture on the right is treated with the synthesized peptide.