

## Product datasheet for **TA314161**

### LTB Rabbit Polyclonal Antibody

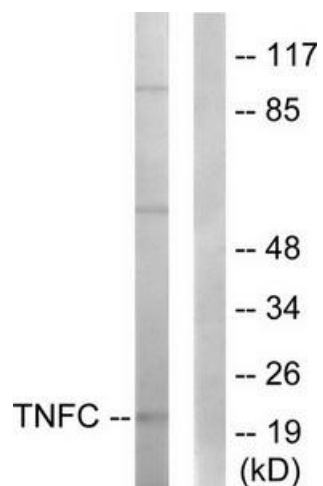
#### Product data:

|                       |   |
|-----------------------|---|
| Product Type:         | Primary Antibodies  |
| Applications:         | IF, WB  |
| Recommended Dilution: | WB: 1:500~1:3000, IF: 1:100~1:500, ELISA: 1:10000   |
| Reactivity:           | Human, Mouse  |
| Host:                 | Rabbit  |
| Isotype:              | IgG   |
| Clonality:            | Polyclonal  |
| Immunogen:            | The antiserum was produced against synthesized peptide derived from C-terminal of human TNFC.   |
| Formulation:          | Phosphate buffered saline (without Mg <sup>2+</sup> and Ca <sup>2+</sup> ), pH 7.4, 150mM NaCl, 0.02% sodium azide and 50% glycerol.  |
| Concentration:        | lot specific  |
| Purification:         | The antibody was affinity-purified from rabbit antiserum by affinity-chromatography using epitope-specific immunogen.                 |
| Conjugation:          | Unconjugated  |
| Storage:              | Store at -20°C as received.   |
| Stability:            | Stable for 12 months from date of receipt.  |
| Gene Name:            | lymphotoxin beta  |
| Database Link:        | <a href="#">NP_002332</a><br><a href="#">Entrez Gene 16994 Mouse</a> <a href="#">Entrez Gene 4050 Human</a><br><a href="#">Q06643</a> |
| Synonyms:             | p33; TNFC; TNFSF3   |
| Note:                 | TNFC antibody detects endogenous levels of total TNFC protein.  |
| Protein Families:     | Druggable Genome, Transmembrane   |
| Protein Pathways:     | Cytokine-cytokine receptor interaction  |

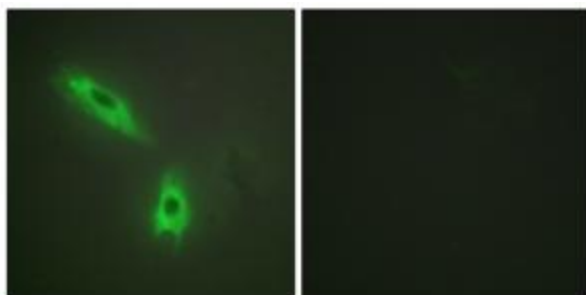


[View online »](#)

## Product images:



Western blot analysis of extracts from HepG2 cells, using TNFC antibody. The lane on the right is treated with the synthesized peptide.



Immunofluorescence analysis of HeLa cells, using TNFC antibody. The picture on the right is treated with the synthesized peptide.