

Product datasheet for **TA314159**

LMX1B Rabbit Polyclonal Antibody

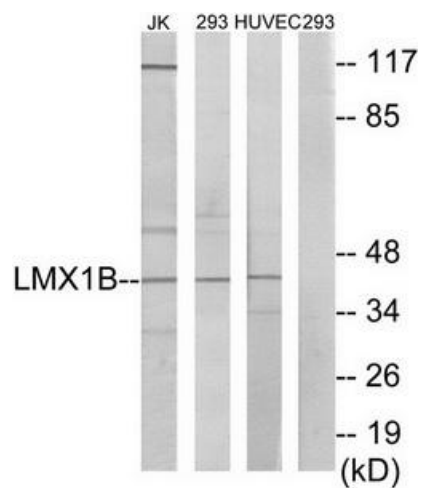
Product data:

Product Type:	Primary Antibodies
Applications:	WB
Recommended Dilution:	WB: 1:500~1:3000, ELISA: 1:40000
Reactivity:	Human, Mouse
Host:	Rabbit
Isotype:	IgG
Clonality:	Polyclonal
Immunogen:	The antiserum was produced against synthesized peptide derived from internal of human LMX1B.
Formulation:	Phosphate buffered saline (without Mg ²⁺ and Ca ²⁺), pH 7.4, 150mM NaCl, 0.02% sodium azide and 50% glycerol.
Concentration:	lot specific
Purification:	The antibody was affinity-purified from rabbit antiserum by affinity-chromatography using epitope-specific immunogen.
Conjugation:	Unconjugated
Storage:	Store at -20°C as received.
Stability:	Stable for 12 months from date of receipt.
Gene Name:	LIM homeobox transcription factor 1 beta
Database Link:	NP_001167617 Entrez Gene 16917 Mouse Entrez Gene 4010 Human O60663
Synonyms:	LMX1.2; NPS1
Note:	LMX1B antibody detects endogenous levels of total LMX1B protein.
Protein Families:	Transcription Factors



[View online »](#)

Product images:



Western blot analysis of extracts from Jurkat cells, 293 cells and HUVEC cells, using LMX1B antibody. The lane on the right is treated with the synthesized peptide.