

Product datasheet for **TA314155**

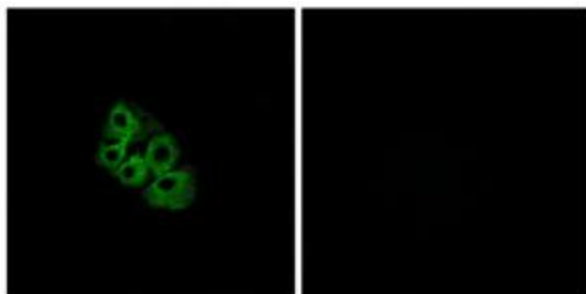
LHCGR Rabbit Polyclonal Antibody

Product data:

Product Type:	Primary Antibodies
Applications:	IF
Recommended Dilution:	IF: 1:100~1:500, ELISA: 1:10000
Reactivity:	Human, Mouse, Rat
Host:	Rabbit
Isotype:	IgG
Clonality:	Polyclonal
Immunogen:	The antiserum was produced against synthesized peptide derived from internal of human LSHR.
Formulation:	Phosphate buffered saline (without Mg ²⁺ and Ca ²⁺), pH 7.4, 150mM NaCl, 0.02% sodium azide and 50% glycerol.
Concentration:	lot specific
Purification:	The antibody was affinity-purified from rabbit antiserum by affinity-chromatography using epitope-specific immunogen.
Conjugation:	Unconjugated
Storage:	Store at -20°C as received.
Stability:	Stable for 12 months from date of receipt.
Gene Name:	luteinizing hormone/choriogonadotropin receptor
Database Link:	NP_000224 Entrez Gene 16867 Mouse Entrez Gene 25477 Rat Entrez Gene 3973 Human P22888
Synonyms:	CG-R; CGR; HHG; LCGR; LGR2; LH; LHR; LHRHR; LSH-R; ULG5
Note:	LSHR antibody detects endogenous levels of total LSHR protein.
Protein Families:	Druggable Genome, Transmembrane
Protein Pathways:	Calcium signaling pathway, Neuroactive ligand-receptor interaction



[View online »](#)

Product images:

Immunofluorescence analysis of A549 cells, using LSHR antibody. The picture on the right is treated with the synthesized peptide.