

Product datasheet for **TA314152**

GAL4 (LGALS4) Rabbit Polyclonal Antibody

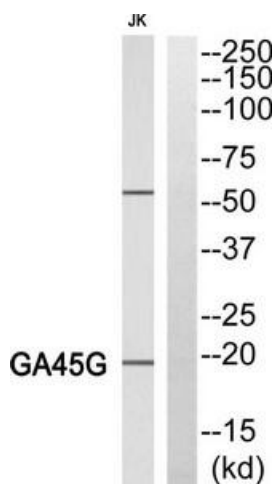
Product data:

Product Type:	Primary Antibodies
Applications:	IHC, WB
Recommended Dilution:	WB: 1:500~1:1000 IHC: 1:50~1:100 ELISA: 1:20000
Reactivity:	Human
Host:	Rabbit
Isotype:	IgG
Clonality:	Polyclonal
Immunogen:	The antiserum was produced against synthesized peptide derived from internal of human LEG4.
Formulation:	Phosphate buffered saline (without Mg ²⁺ and Ca ²⁺), pH 7.4, 150mM NaCl, 0.02% sodium azide and 50% glycerol.
Concentration:	lot specific
Purification:	The antibody was affinity-purified from rabbit antiserum by affinity-chromatography using epitope-specific immunogen.
Conjugation:	Unconjugated
Storage:	Store at -20°C as received.
Stability:	Stable for 12 months from date of receipt.
Gene Name:	galectin 4
Database Link:	NP_006140 Entrez Gene 3960 Human P56470
Synonyms:	GAL4; L36LBP

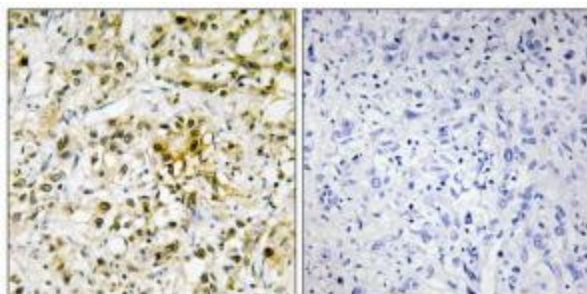


[View online »](#)

Product images:



Western blot analysis of extracts from HeLa cells, using LEG7 antibody. The lane on the right is treated with the synthesized peptide.



Western blot analysis of extracts from COLO cells, using LEG4 antibody. The picture on the right is treated with the synthesized peptide.