

## Product datasheet for **TA314151**

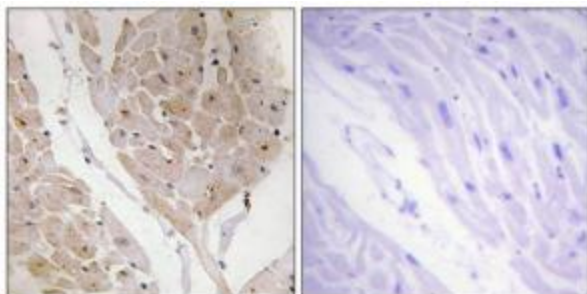
### Galectin 2 (LGALS2) Rabbit Polyclonal Antibody

#### Product data:

Product Type:	Primary Antibodies
Applications:	IF, IHC
Recommended Dilution:	IHC: 1:50~1:100, IF: 1:100~1:500, ELISA: 1:1000
Reactivity:	Human, Mouse, Rat
Host:	Rabbit
Isotype:	IgG
Clonality:	Polyclonal
Immunogen:	The antiserum was produced against synthesized peptide derived from internal of human LEG2.
Formulation:	Phosphate buffered saline (without Mg <sup>2+</sup> and Ca <sup>2+</sup> ), pH 7.4, 150mM NaCl, 0.02% sodium azide and 50% glycerol.
Concentration:	lot specific
Purification:	The antibody was affinity-purified from rabbit antiserum by affinity-chromatography using epitope-specific immunogen.
Conjugation:	Unconjugated
Storage:	Store at -20°C as received.
Stability:	Stable for 12 months from date of receipt.
Gene Name:	galectin 2
Database Link:	<a href="#">NP_006489</a> <a href="#">Entrez Gene 107753 MouseEntrez Gene 171134 RatEntrez Gene 3957 Human P05162</a>
Synonyms:	HL14
Note:	LEG2 antibody detects endogenous levels of total LEG2 protein.



[View online »](#)

**Product images:**

Immunohistochemistry analysis of paraffin-embedded human heart tissue using LEG2 antibody. The picture on the right is treated with the synthesized peptide.



Immunofluorescence analysis of COS-7 cells, using LEG2 antibody. The picture on the right is treated with the synthesized peptide.