

Product datasheet for **TA314150**

Lunatic Fringe (LFNG) Rabbit Polyclonal Antibody

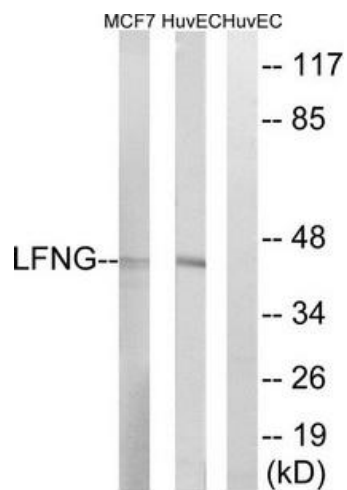
Product data:

| | |
|-----------------------|---|
| Product Type: | Primary Antibodies |
| Applications: | WB |
| Recommended Dilution: | WB: 1:500~1:3000, ELISA: 1:10000 |
| Reactivity: | Mouse, Rat, Human |
| Host: | Rabbit |
| Isotype: | IgG |
| Clonality: | Polyclonal |
| Immunogen: | he antiserum was produced against synthesized peptide derived from internal of human LFNG. |
| Formulation: | Phosphate buffered saline (without Mg ²⁺ and Ca ²⁺), pH 7.4, 150mM NaCl, 0.02% sodium azide and 50% glycerol. |
| Concentration: | lot specific |
| Purification: | The antibody was affinity-purified from rabbit antiserum by affinity-chromatography using epitope-specific immunogen. |
| Conjugation: | Unconjugated |
| Storage: | Store at -20°C as received. |
| Stability: | Stable for 12 months from date of receipt. |
| Gene Name: | LFNG O-fucosylpeptide 3-beta-N-acetylglucosaminyltransferase |
| Database Link: | NP_001035257 Entrez Gene 16848 Mouse Entrez Gene 170905 Rat Entrez Gene 3955 Human Q8NES3 |
| Synonyms: | SCDO3 |
| Note: | LFNG antibody detects endogenous levels of total LFNG protein. |
| Protein Families: | Transmembrane |
| Protein Pathways: | Notch signaling pathway |



[View online »](#)

Product images:



Western blot analysis of extracts from MCF-7 cells and HUVEC cells, using LFNG antibody. The lane on the right is treated with the synthesized peptide.