

Product datasheet for **TA314149**

Laminin gamma 1 (LAMC1) Rabbit Polyclonal Antibody

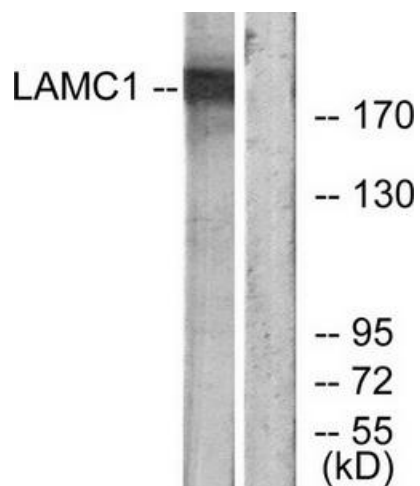
Product data:

Product Type:	Primary Antibodies
Applications:	WB
Recommended Dilution:	WB: 1:500~1:3000, ELISA: 1:40000
Reactivity:	Human, Mouse, Rat
Host:	Rabbit
Isotype:	IgG
Clonality:	Polyclonal
Immunogen:	The antiserum was produced against synthesized peptide derived from internal of human LAMC1.
Formulation:	Phosphate buffered saline (without Mg ²⁺ and Ca ²⁺), pH 7.4, 150mM NaCl, 0.02% sodium azide and 50% glycerol.
Concentration:	lot specific
Purification:	The antibody was affinity-purified from rabbit antiserum by affinity-chromatography using epitope-specific immunogen.
Conjugation:	Unconjugated
Storage:	Store at -20°C as received.
Stability:	Stable for 12 months from date of receipt.
Gene Name:	laminin subunit gamma 1
Database Link:	NP_002284 Entrez Gene 117036 Rat Entrez Gene 226519 Mouse Entrez Gene 3915 Human P11047
Synonyms:	LAMB2
Note:	LAMC1 antibody detects endogenous levels of total LAMC1 protein.
Protein Families:	Druggable Genome, Secreted Protein
Protein Pathways:	ECM-receptor interaction, Focal adhesion, Pathways in cancer, Prion diseases, Small cell lung cancer



[View online »](#)

Product images:



Western blot analysis of extracts from HUVEC cells, using LAMC1 antibody. The lane on the right is treated with the synthesized peptide.