

Product datasheet for **TA314148**

Laminin beta 2 (LAMB2) Rabbit Polyclonal Antibody

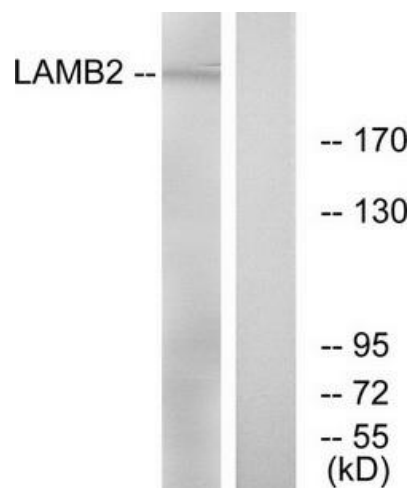
Product data:

Product Type:	Primary Antibodies
Applications:	WB
Recommended Dilution:	WB: 1:500~1:3000, ELISA: 1:5000
Reactivity:	Human, Mouse, Rat
Host:	Rabbit
Isotype:	IgG
Clonality:	Polyclonal
Immunogen:	The antiserum was produced against synthesized peptide derived from internal of human LAMB2.
Formulation:	Phosphate buffered saline (without Mg ²⁺ and Ca ²⁺), pH 7.4, 150mM NaCl, 0.02% sodium azide and 50% glycerol.
Concentration:	lot specific
Purification:	The antibody was affinity-purified from rabbit antiserum by affinity-chromatography using epitope-specific immunogen.
Conjugation:	Unconjugated
Storage:	Store at -20°C as received.
Stability:	Stable for 12 months from date of receipt.
Gene Name:	laminin subunit beta 2
Database Link:	NP_002283 Entrez Gene 16779 Mouse Entrez Gene 25473 Rat Entrez Gene 3913 Human P55268
Synonyms:	LAMS; NPHS5
Note:	LAMB2 antibody detects endogenous levels of total LAMB2 protein.
Protein Families:	Druggable Genome, Secreted Protein
Protein Pathways:	ECM-receptor interaction, Focal adhesion, Pathways in cancer, Small cell lung cancer



[View online »](#)

Product images:



Western blot analysis of extracts from RAW264.7 cells, using LAMB2 antibody. The lane on the right is treated with the synthesized peptide.