

Product datasheet for **TA314147**

Laminin beta 1 (LAMB1) Rabbit Polyclonal Antibody

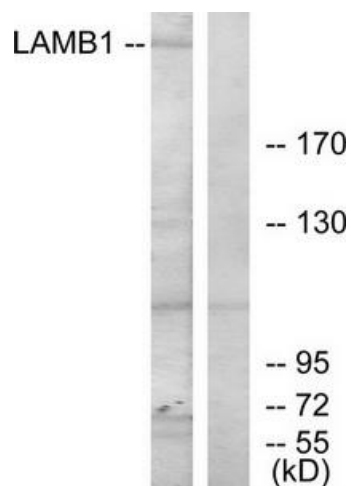
Product data:

Product Type:	Primary Antibodies
Applications:	IF, IHC, WB
Recommended Dilution:	WB: 1:500~1:3000, IHC: 1:50~1:100, IF: 1:100~1:500, ELISA: 1:10000
Reactivity:	Human, Mouse
Host:	Rabbit
Isotype:	IgG
Clonality:	Polyclonal
Immunogen:	The antiserum was produced against synthesized peptide derived from C-terminal of human LAMB1.
Formulation:	Phosphate buffered saline (without Mg ²⁺ and Ca ²⁺), pH 7.4, 150mM NaCl, 0.02% sodium azide and 50% glycerol.
Concentration:	lot specific
Purification:	The antibody was affinity-purified from rabbit antiserum by affinity-chromatography using epitope-specific immunogen.
Conjugation:	Unconjugated
Storage:	Store at -20°C as received.
Stability:	Stable for 12 months from date of receipt.
Gene Name:	laminin subunit beta 1
Database Link:	NP_002282 Entrez Gene 16777 Mouse Entrez Gene 3912 Human P07942
Synonyms:	CLM; LIS5
Note:	LAMB1 antibody detects endogenous levels of total LAMB1 protein
Protein Families:	Druggable Genome, Secreted Protein
Protein Pathways:	ECM-receptor interaction, Focal adhesion, Pathways in cancer, Small cell lung cancer

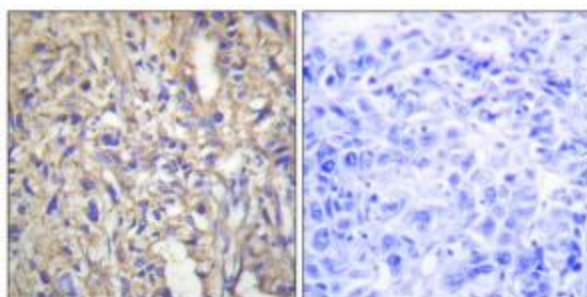


[View online »](#)

Product images:



Western blot analysis of extracts from HepG2 cells, using LAMB1 antibody. The lane on the right is treated with the synthesized peptide.



Immunohistochemistry analysis of paraffin-embedded human liver carcinoma tissue using LAMB1 antibody. The picture on the right is treated with the synthesized peptide.



Immunofluorescence analysis of HeLa cells, using LAMB1 antibody. The picture on the right is treated with the synthesized peptide.