

## Product datasheet for **TA314145**

### Laminin alpha 4 (LAMA4) Rabbit Polyclonal Antibody

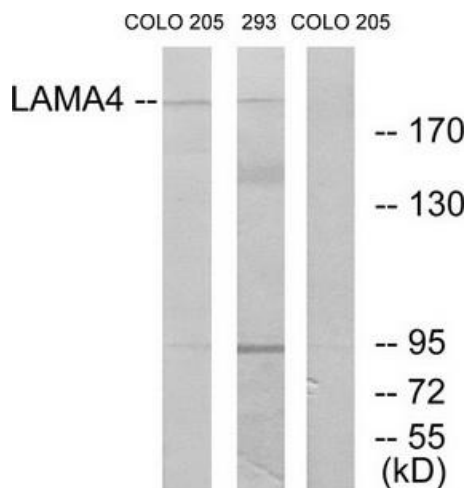
#### Product data:

|                       |  |
|-----------------------|--|
| Product Type:         | Primary Antibodies   |
| Applications:         | IF, IHC, WB  |
| Recommended Dilution: | WB: 1:500~1:3000, IHC: 1:50~1:100, IF: 1:100~1:500, ELISA: 1:40000   |
| Reactivity:           | Human, Mouse   |
| Host:                 | Rabbit   |
| Isotype:              | IgG  |
| Clonality:            | Polyclonal   |
| Immunogen:            | The antiserum was produced against synthesized peptide derived from internal of human LAMA4.   |
| Formulation:          | Phosphate buffered saline (without Mg <sup>2+</sup> and Ca <sup>2+</sup> ), pH 7.4, 150mM NaCl, 0.02% sodium azide and 50% glycerol.     |
| Purification:         | The antibody was affinity-purified from rabbit antiserum by affinity-chromatography using epitope-specific immunogen.                    |
| Conjugation:          | Unconjugated   |
| Storage:              | Store at -20°C as received.  |
| Stability:            | Stable for 12 months from date of receipt.   |
| Gene Name:            | laminin subunit alpha 4  |
| Database Link:        | <a href="#">NP_001098676</a><br><a href="#">Entrez Gene 16775 Mouse</a> <a href="#">Entrez Gene 3910 Human</a><br><a href="#">Q16363</a> |
| Synonyms:             | CMD1JJ; LAMA3; LAMA4 -1; LAMA4*-1  |
| Note:                 | LAMA4 antibody detects endogenous levels of total LAMA4 protein.   |
| Protein Families:     | Druggable Genome, Secreted Protein   |
| Protein Pathways:     | ECM-receptor interaction, Focal adhesion, Pathways in cancer, Small cell lung cancer   |

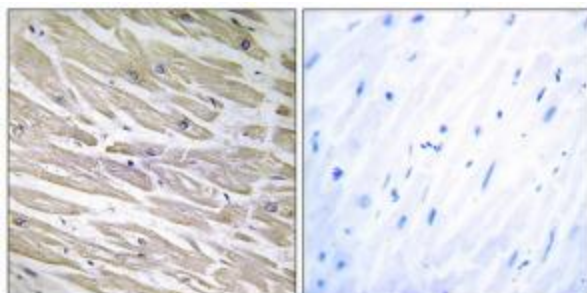


[View online »](#)

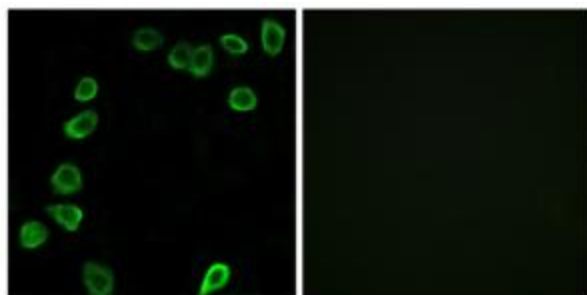
Product images:



Western blot analysis of extracts from COLO cells and 293 cells, using LAMA4 antibody. The lane on the right is treated with the synthesized peptide.



Immunohistochemistry analysis of paraffin-embedded human heart tissue using LAMA4 antibody. The picture on the right is treated with the synthesized peptide.



Immunofluorescence analysis of NIH/3T3 cells, using LAMA4 antibody. The picture on the right is treated with the synthesized peptide.