

Product datasheet for **TA314143**

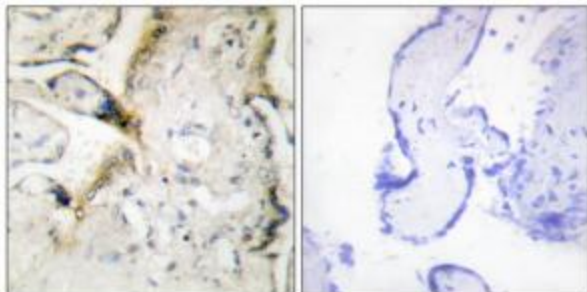
Laminin 2 alpha (LAMA2) Rabbit Polyclonal Antibody

Product data:

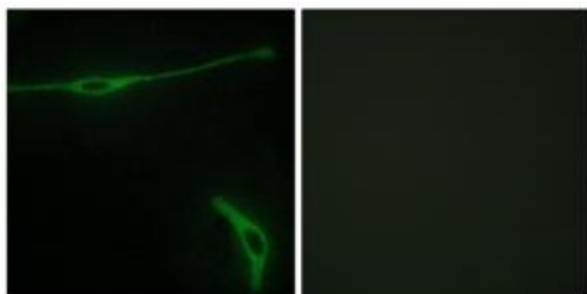
Product Type:	Primary Antibodies
Applications:	IF, IHC
Recommended Dilution:	IHC: 1:50~1:100, IF: 1:100~1:500, ELISA: 1:20000
Reactivity:	Human, Mouse
Host:	Rabbit
Isotype:	IgG
Clonality:	Polyclonal
Immunogen:	The antiserum was produced against synthesized peptide derived from internal of human LAMA2.
Formulation:	Phosphate buffered saline (without Mg ²⁺ and Ca ²⁺), pH 7.4, 150mM NaCl, 0.02% sodium azide and 50% glycerol.
Concentration:	lot specific
Purification:	The antibody was affinity-purified from rabbit antiserum by affinity-chromatography using epitope-specific immunogen.
Conjugation:	Unconjugated
Storage:	Store at -20°C as received.
Stability:	Stable for 12 months from date of receipt.
Gene Name:	laminin subunit alpha 2
Database Link:	NP_000417 Entrez Gene 16773 Mouse Entrez Gene 3908 Human P24043
Synonyms:	LAMM
Note:	LAMA2 antibody detects endogenous levels of total LAMA2 protein.
Protein Families:	Druggable Genome
Protein Pathways:	Arrhythmogenic right ventricular cardiomyopathy (ARVC), Dilated cardiomyopathy, ECM-receptor interaction, Focal adhesion, Hypertrophic cardiomyopathy (HCM), Pathways in cancer, Small cell lung cancer, Viral myocarditis



[View online »](#)

Product images:

Immunohistochemistry analysis of paraffin-embedded human placenta tissue using LAMA2 antibody. The picture on the right is treated with the synthesized peptide.



Immunofluorescence analysis of NIH/3T3 cells, using LAMA2 antibody. The picture on the right is treated with the synthesized peptide.