

Product datasheet for **TA314142**

Cytokeratin 17 (KRT17) Rabbit Polyclonal Antibody

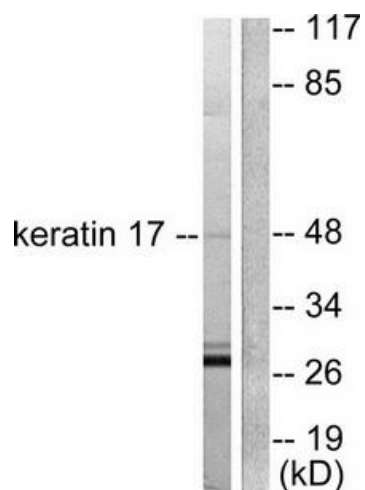
Product data:

Product Type:	Primary Antibodies
Applications:	IF, IHC, WB
Recommended Dilution:	WB: 1:500~1:3000, IHC: 1:50~1:100, IF: 1:100~1:500, ELISA: 1:20000
Reactivity:	Human, Mouse, Rat
Host:	Rabbit
Isotype:	IgG
Clonality:	Polyclonal
Immunogen:	The antiserum was produced against synthesized peptide derived from human keratin 17.
Formulation:	Phosphate buffered saline (without Mg ²⁺ and Ca ²⁺), pH 7.4, 150mM NaCl, 0.02% sodium azide and 50% glycerol.
Concentration:	lot specific
Purification:	The antibody was affinity-purified from rabbit antiserum by affinity-chromatography using epitope-specific immunogen.
Conjugation:	Unconjugated
Storage:	Store at -20°C as received.
Stability:	Stable for 12 months from date of receipt.
Gene Name:	keratin 17
Database Link:	NP_000413 Entrez Gene 16667 MouseEntrez Gene 287702 RatEntrez Gene 3872 Human Q04695
Synonyms:	39.1; CK-17; K17; PC; PC2; PCHC1
Note:	Keratin 17 antibody detects endogenous levels of total keratin 17 protein.

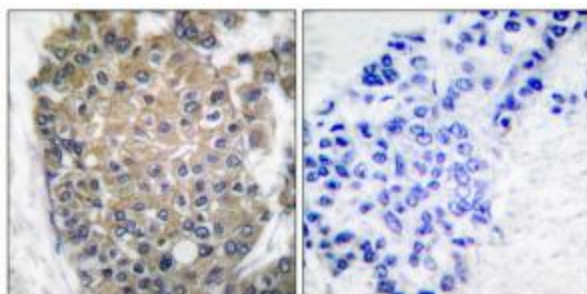


[View online »](#)

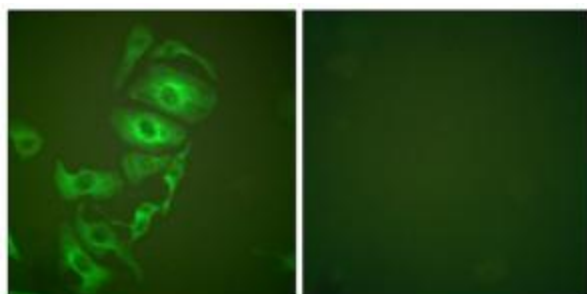
Product images:



Western blot analysis of extracts from HuvEc cells, using keratin 17 antibody (#TA314142). The lane on the right is treated with the synthesized peptide.



Immunohistochemical analysis of paraffin-embedded human breast carcinoma tissue using keratin 17 antibody (#TA314142). The picture on the right is treated with the synthesized peptide.



Immunofluorescence analysis of HepG2 cells, using keratin 17 antibody (#TA314142). The picture on the right is treated with the synthesized peptide.