

## Product datasheet for **TA314141**

### Cytokeratin 10 (KRT10) Rabbit Polyclonal Antibody

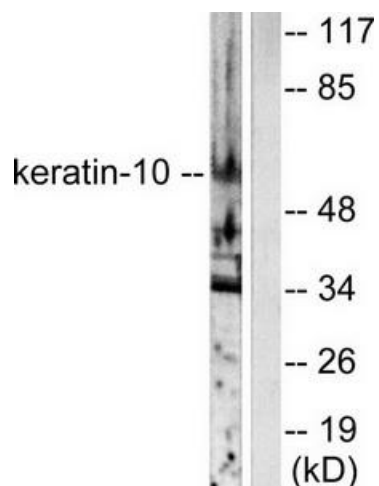
#### Product data:

Product Type:	Primary Antibodies
Applications:	IF, WB
Recommended Dilution:	WB: 1:500~1:3000, IF: 1:100~1:500, ELISA: 1:5000
Reactivity:	Human, Rat
Host:	Rabbit
Isotype:	IgG
Clonality:	Polyclonal
Immunogen:	The antiserum was produced against synthesized peptide derived from human Keratin 10.
Formulation:	Phosphate buffered saline (without Mg <sup>2+</sup> and Ca <sup>2+</sup> ), pH 7.4, 150mM NaCl, 0.02% sodium azide and 50% glycerol.
Concentration:	lot specific
Purification:	The antibody was affinity-purified from rabbit antiserum by affinity-chromatography using epitope-specific immunogen.
Conjugation:	Unconjugated
Storage:	Store at -20°C as received.
Stability:	Stable for 12 months from date of receipt.
Gene Name:	keratin 10
Database Link:	<a href="#">NP_000412</a> <a href="#">Entrez Gene 450225 Rat</a> <a href="#">Entrez Gene 3858 Human</a> <a href="#">P13645</a>
Synonyms:	BCIE; BIE; CK10; EHK; K10; KPP
Note:	Keratin 10 antibody detects endogenous levels of total Keratin 10 protein.

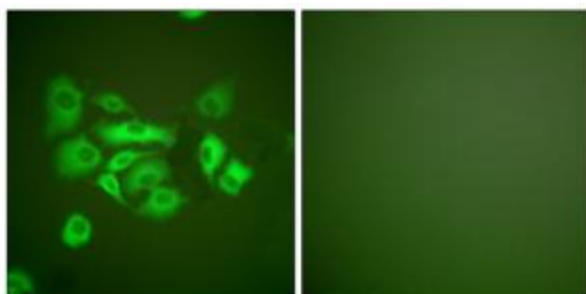


[View online »](#)

## Product images:



Western blot analysis of extracts from HeLa cells, using Keratin 10 antibody (#TA314141). The lane on the right is treated with the synthesized peptide.



Immunofluorescence analysis of A549 cells, using Keratin 10 antibody (#TA314141). The picture on the right is treated with the synthesized peptide.