

Product datasheet for **TA314120**

KCNA5 Rabbit Polyclonal Antibody

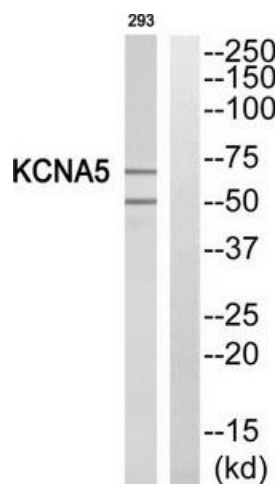
Product data:

Product Type:	Primary Antibodies
Applications:	WB
Recommended Dilution:	WB: 1:500~1:3000, ELISA: 1:40000
Reactivity:	Human, Mouse, Rat
Host:	Rabbit
Isotype:	IgG
Clonality:	Polyclonal
Immunogen:	The antiserum was produced against synthesized peptide derived from internal of human KCNA5 with sequence CLPEFRDERELLRH.
Formulation:	Phosphate buffered saline (without Mg ²⁺ and Ca ²⁺), pH 7.4, 150mM NaCl, 0.02% sodium azide and 50% glycerol.
Concentration:	lot specific
Purification:	The antibody was affinity-purified from rabbit antiserum by affinity-chromatography using epitope-specific immunogen.
Conjugation:	Unconjugated
Storage:	Store at -20°C as received.
Stability:	Stable for 12 months from date of receipt.
Gene Name:	potassium voltage-gated channel subfamily A member 5
Database Link:	NP_002225 Entrez Gene 16493 Mouse Entrez Gene 25470 Rat Entrez Gene 3741 Human P22460
Synonyms:	ATFB7; HCK1; HK2; HPCN1; KV1.5; PCN1
Note:	KCNA5 antibody detects endogenous levels of total KCNA5 protein.
Protein Families:	Druggable Genome, Ion Channels: Potassium, Transmembrane



[View online »](#)

Product images:



Western blot analysis of extracts from 293 cells, using KCNA5 antibody. The lane on the right is treated with the synthesized peptide.