

## Product datasheet for **TA314113**

### JAK2 Rabbit Polyclonal Antibody

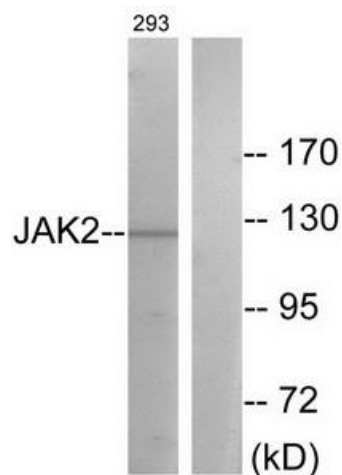
#### Product data:

Product Type:	Primary Antibodies
Applications:	IF, WB
Recommended Dilution:	WB: 1:500~1:3000, IF: 1:100~1:500, ELISA: 1:5000
Reactivity:	Human, Mouse, Rat
Host:	Rabbit
Isotype:	IgG
Clonality:	Polyclonal
Immunogen:	The antiserum was produced against synthesized non-phosphopeptide derived from human JAK2 around the phosphorylation site of tyrosine 570 (G-D-YP-G-Q).
Formulation:	Phosphate buffered saline (without Mg <sup>2+</sup> and Ca <sup>2+</sup> ), pH 7.4, 150mM NaCl, 0.02% sodium azide and 50% glycerol.
Concentration:	lot specific
Purification:	The antibody was affinity-purified from rabbit antiserum by affinity-chromatography using epitope-specific immunogen.
Conjugation:	Unconjugated
Storage:	Store at -20°C as received.
Stability:	Stable for 12 months from date of receipt.
Gene Name:	Janus kinase 2
Database Link:	<a href="#">NP_004963</a> <a href="#">Entrez Gene 16452 Mouse</a> <a href="#">Entrez Gene 24514 Rat</a> <a href="#">Entrez Gene 3717 Human</a> <a href="#">O60674</a>
Synonyms:	JTK10; THCYT3
Note:	JAK2 (Ab-570) antibody detects endogenous levels of total JAK2 protein.
Protein Families:	Druggable Genome, Protein Kinase
Protein Pathways:	Adipocytokine signaling pathway, Chemokine signaling pathway, Jak-STAT signaling pathway

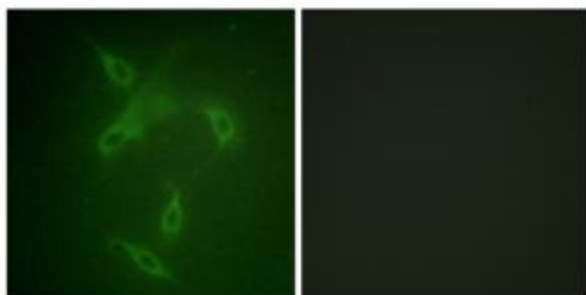


[View online »](#)

## Product images:



Western blot analysis of extracts from 293 cells, treated with etoposide (25uM, 24hours), using JAK2 (Ab-570) antibody. The lane on the right is treated with the synthesized peptide.



Immunofluorescence analysis of NIH/3T3 cells, using JAK2 (Ab-570) antibody. The picture on the right is treated with the synthesized peptide.