

Product datasheet for **TA314108**

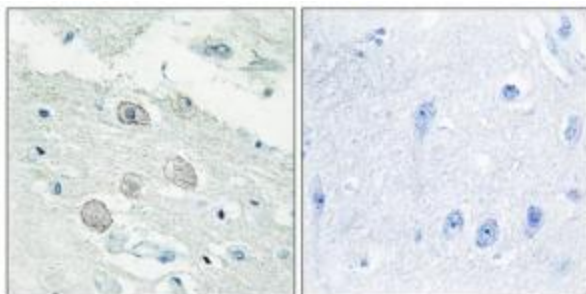
JAK1 Rabbit Polyclonal Antibody

Product data:

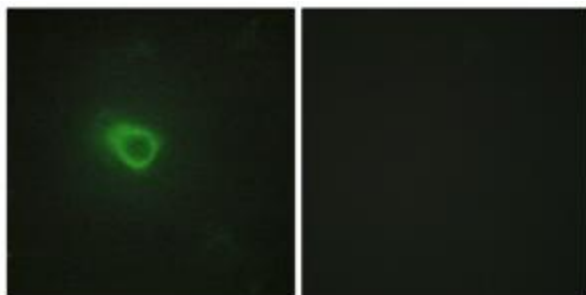
Product Type:	Primary Antibodies
Applications:	IF, IHC
Recommended Dilution:	IHC: 1:50~1:100, IF: 1:100~1:500, ELISA: 1:10000
Reactivity:	Human, Mouse, Rat
Host:	Rabbit
Isotype:	IgG
Clonality:	Polyclonal
Immunogen:	The antiserum was produced against synthesized peptide derived from internal of human JAK1.
Formulation:	Phosphate buffered saline (without Mg ²⁺ and Ca ²⁺), pH 7.4, 150mM NaCl, 0.02% sodium azide and 50% glycerol.
Concentration:	lot specific
Purification:	The antibody was affinity-purified from rabbit antiserum by affinity-chromatography using epitope-specific immunogen.
Conjugation:	Unconjugated
Storage:	Store at -20°C as received.
Stability:	Stable for 12 months from date of receipt.
Gene Name:	Janus kinase 1
Database Link:	NP_002218 Entrez Gene 16451 Mouse Entrez Gene 84598 Rat Entrez Gene 3716 Human P23458
Synonyms:	JAK1A; JAK1B; JTK3
Note:	JAK1 antibody detects endogenous levels of total JAK1 protein.
Protein Families:	Druggable Genome, Protein Kinase
Protein Pathways:	Jak-STAT signaling pathway, Pancreatic cancer, Pathways in cancer



[View online »](#)

Product images:

Immunohistochemistry analysis of paraffin-embedded human brain tissue, using JAK1 antibody. The picture on the right is treated with the synthesized peptide.



Immunofluorescence analysis of HeLa cells, using JAK1 antibody. The picture on the right is treated with the synthesized peptide.