

## Product datasheet for **TA314103**

### ITPKB Rabbit Polyclonal Antibody

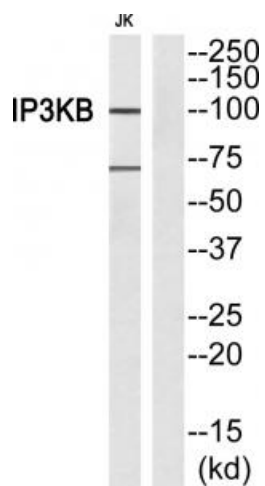
#### Product data:

Product Type:	Primary Antibodies
Applications:	WB
Recommended Dilution:	WB: 1:500~1:3000, ELISA: 1:40000
Reactivity:	Human, Mouse, Rat
Host:	Rabbit
Isotype:	IgG
Clonality:	Polyclonal
Immunogen:	The antiserum was produced against synthesized peptide derived from Internal of human ITPKB.
Formulation:	Phosphate buffered saline (without Mg <sup>2+</sup> and Ca <sup>2+</sup> ), pH 7.4, 150mM NaCl, 0.02% sodium azide and 50% glycerol.
Concentration:	lot specific
Purification:	The antibody was affinity-purified from rabbit antiserum by affinity-chromatography using epitope-specific immunogen.
Conjugation:	Unconjugated
Storage:	Store at -20°C as received.
Stability:	Stable for 12 months from date of receipt.
Gene Name:	inositol-trisphosphate 3-kinase B
Database Link:	<a href="#">NP_002212</a> <a href="#">Entrez Gene 54260 Rat</a> <a href="#">Entrez Gene 320404 Mouse</a> <a href="#">Entrez Gene 3707 Human</a> <a href="#">P27987</a>
Synonyms:	IP3-3KB; IP3K; IP3K-B; IP3KB; PIG37
Note:	ITPKB antibody detects endogenous levels of total ITPKB protein.
Protein Families:	Druggable Genome
Protein Pathways:	Calcium signaling pathway, Inositol phosphate metabolism, Metabolic pathways, Phosphatidylinositol signaling system



[View online »](#)

## Product images:



Western blot analysis of extracts from Jurkat cells, using ITPKB antibody. The lane on the right is treated with the synthesized peptide.