

Product datasheet for **TA314101**

ITPK1 Rabbit Polyclonal Antibody

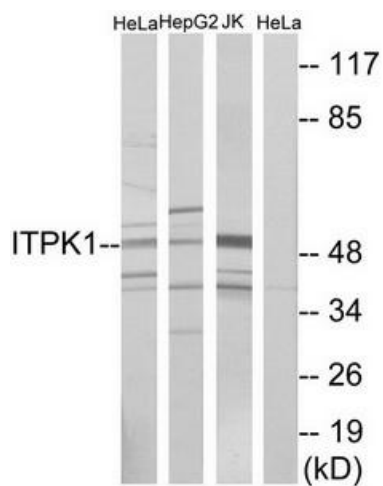
Product data:

Product Type:	Primary Antibodies
Applications:	WB
Recommended Dilution:	WB: 1:500~1:3000, ELISA: 1:10000
Reactivity:	Human, Mouse
Host:	Rabbit
Isotype:	IgG
Clonality:	Polyclonal
Immunogen:	The antiserum was produced against synthesized peptide derived from internal of human ITPK1.
Formulation:	Phosphate buffered saline (without Mg ²⁺ and Ca ²⁺), pH 7.4, 150mM NaCl, 0.02% sodium azide and 50% glycerol.
Concentration:	lot specific
Purification:	The antibody was affinity-purified from rabbit antiserum by affinity-chromatography using epitope-specific immunogen.
Conjugation:	Unconjugated
Storage:	Store at -20°C as received.
Stability:	Stable for 12 months from date of receipt.
Gene Name:	inositol-tetrakisphosphate 1-kinase
Database Link:	NP_001136065 Entrez Gene 217837 Mouse Entrez Gene 3705 Human Q13572
Synonyms:	ITRPK1
Note:	ITPK1 antibody detects endogenous levels of total ITPK1 protein.
Protein Families:	Druggable Genome
Protein Pathways:	Inositol phosphate metabolism, Metabolic pathways, Phosphatidylinositol signaling system



[View online »](#)

Product images:



Western blot analysis of extracts from HeLa cells, HepG2 cells and Jurkat cells, using ITPK1 antibody. The lane on the right is treated with the synthesized peptide.