

Product datasheet for **TA314098**

ITIH1 Rabbit Polyclonal Antibody

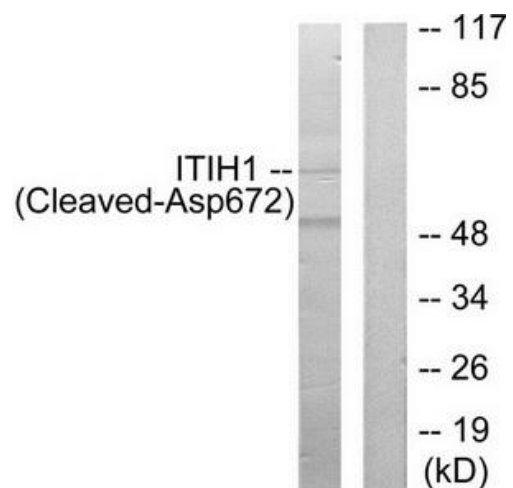
Product data:

Product Type:	Primary Antibodies
Applications:	WB
Recommended Dilution:	WB: 1:500~1:3000, ELISA: 1:20000
Reactivity:	Human, Mouse
Host:	Rabbit
Isotype:	IgG
Clonality:	Polyclonal
Immunogen:	The antiserum was produced against synthesized peptide derived from human ITIH1.
Formulation:	Phosphate buffered saline (without Mg ²⁺ and Ca ²⁺), pH 7.4, 150mM NaCl, 0.02% sodium azide and 50% glycerol.
Concentration:	lot specific
Purification:	The antibody was affinity-purified from rabbit antiserum by affinity-chromatography using epitope-specific immunogen.
Conjugation:	Unconjugated
Storage:	Store at -20°C as received.
Stability:	Stable for 12 months from date of receipt.
Gene Name:	inter-alpha-trypsin inhibitor heavy chain 1
Database Link:	NP_001159906 Entrez Gene 16424 Mouse Entrez Gene 3697 Human P19827
Synonyms:	H1P; IATIH; IGHEP1; ITI-HC1; ITIH; SHAP
Note:	ITIH1 (Cleaved-Asp672) antibody detects endogenous levels of fragment of activated ITIH1 resulting from cleavage adjacent to Asp672.
Protein Families:	Transmembrane



[View online »](#)

Product images:



Western blot analysis of extracts from Jurkat cells, treated with etoposide (25uM, 24hours), using ITIH1 (Cleaved-Asp672) antibody. The lane on the right is treated with the synthesized peptide.