

Product datasheet for **TA314096**

Integrin beta 4 (ITGB4) Rabbit Polyclonal Antibody

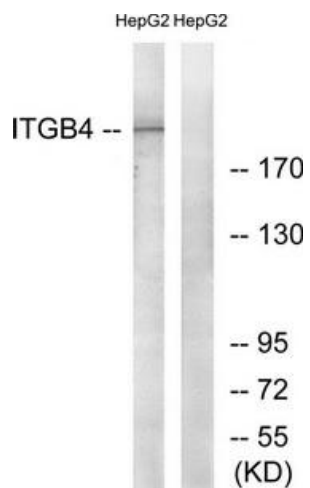
Product data:

Product Type:	Primary Antibodies
Applications:	IHC, WB
Recommended Dilution:	WB: 1:500~1:3000, IHC: 1:50~1:100, ELISA: 1:5000
Reactivity:	Human, Mouse, Rat
Host:	Rabbit
Isotype:	IgG
Clonality:	Polyclonal
Immunogen:	The antiserum was produced against synthesized non-phosphopeptide derived from human ITGB4 around the phosphorylation site of tyrosine 1510 (R-D-YP-S-T).
Formulation:	Phosphate buffered saline (without Mg ²⁺ and Ca ²⁺), pH 7.4, 150mM NaCl, 0.02% sodium azide and 50% glycerol.
Concentration:	lot specific
Purification:	The antibody was affinity-purified from rabbit antiserum by affinity-chromatography using epitope-specific immunogen.
Conjugation:	Unconjugated
Storage:	Store at -20°C as received.
Stability:	Stable for 12 months from date of receipt.
Gene Name:	integrin subunit beta 4
Database Link:	NP_000204 Entrez Gene 25724 Rat Entrez Gene 192897 Mouse Entrez Gene 3691 Human P16144
Synonyms:	CD104; GP150
Note:	ITGB4 (Ab-1510) antibody detects endogenous levels of total ITGB4 protein.
Protein Families:	Druggable Genome
Protein Pathways:	Arrhythmogenic right ventricular cardiomyopathy (ARVC), Dilated cardiomyopathy, ECM-receptor interaction, Focal adhesion, Hypertrophic cardiomyopathy (HCM), Regulation of actin cytoskeleton

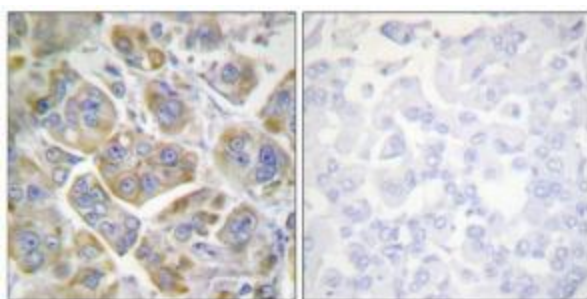


[View online »](#)

Product images:



Western blot analysis of extracts from HepG2 cells, treated with PMA (125ng/ml, 30mins), using ITGB4 (Ab-1510) antibody. The lane on the right is treated with the synthesized peptide.



Immunohistochemistry analysis of paraffin-embedded human breast carcinoma tissue using ITGB4 (Ab-1510) antibody. The picture on the right is treated with the synthesized peptide.