

Product datasheet for **TA314085**

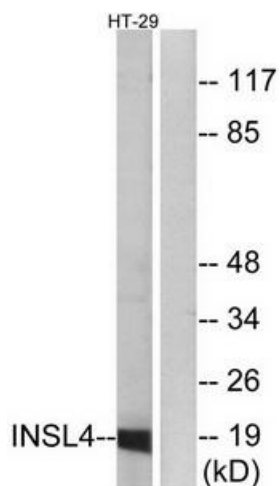
INSL4 Rabbit Polyclonal Antibody

Product data:

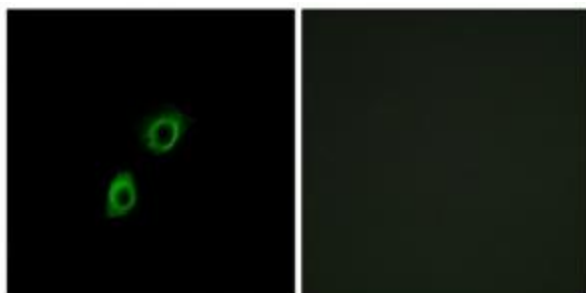
Product Type:	Primary Antibodies
Applications:	IF, WB
Recommended Dilution:	WB: 1:500~1:3000, IF: 1:100~1:500, ELISA: 1:20000
Reactivity:	Human
Host:	Rabbit
Isotype:	IgG
Clonality:	Polyclonal
Immunogen:	The antiserum was produced against synthesized peptide derived from internal of human INSL4.
Formulation:	Phosphate buffered saline (without Mg ²⁺ and Ca ²⁺), pH 7.4, 150mM NaCl, 0.02% sodium azide and 50% glycerol.
Concentration:	lot specific
Purification:	The antibody was affinity-purified from rabbit antiserum by affinity-chromatography using epitope-specific immunogen.
Conjugation:	Unconjugated
Storage:	Store at -20°C as received.
Stability:	Stable for 12 months from date of receipt.
Gene Name:	insulin like 4
Database Link:	NP_002186 Entrez Gene 3641 Human Q14641
Synonyms:	EPIL; PLACENTIN
Note:	INSL4 antibody detects endogenous levels of total INSL4 protein.
Protein Families:	Druggable Genome, Secreted Protein



[View online »](#)

Product images:

Western blot analysis of extracts from HT-29 cells, using INSL4 antibody. The lane on the right is treated with the synthesized peptide.



Immunofluorescence analysis of A549 cells, using INSL4 antibody. The picture on the right is treated with the synthesized peptide.