

Product datasheet for **TA314076**

IL9R Rabbit Polyclonal Antibody

Product data:

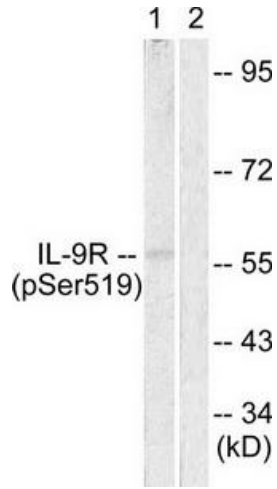
Product Type:	Primary Antibodies
Applications:	IF, IHC, WB
Recommended Dilution:	WB: 1:500~1:3000, IHC: 1:50~1:100, IF: 1:100~1:500, ELISA: 1:20000
Reactivity:	Human
Modifications:	Phospho-specific
Host:	Rabbit
Isotype:	IgG
Clonality:	Polyclonal
Immunogen:	The antiserum was produced against synthesized phosphopeptide derived from human IL-9R around the phosphorylation site of serine 519 (A-R-SP-W-T).
Formulation:	Phosphate buffered saline (without Mg ²⁺ and Ca ²⁺), pH 7.4, 150mM NaCl, 0.02% sodium azide and 50% glycerol.
Concentration:	lot specific
Purification:	The antibody was affinity-purified from rabbit antiserum by affinity-chromatography using epitope-specific immunogen.
Conjugation:	Unconjugated
Storage:	Store at -20°C as received.
Stability:	Stable for 12 months from date of receipt.
Gene Name:	interleukin 9 receptor
Database Link:	NP_002177 Entrez Gene 3581 Human Q01113
Synonyms:	CD129; IL-9R
Note:	IL-9R (Phospho-Ser519) antibody detects endogenous levels of IL-9R only when phosphorylated at serine 519.
Protein Families:	Druggable Genome, Secreted Protein, Transmembrane



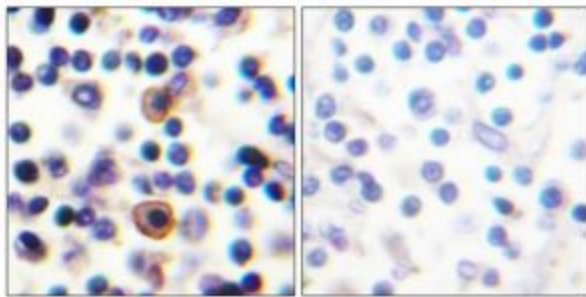
[View online »](#)

Protein Pathways: Cytokine-cytokine receptor interaction, Hematopoietic cell lineage, Jak-STAT signaling pathway

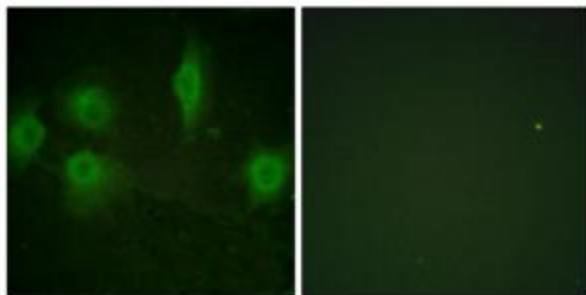
Product images:



Western blot analysis of extracts from HuvEc cells, using IL-9R (Phospho-Ser519) antibody. The lane on the right is treated with the synthesized peptide.



Immunohistochemistry analysis of paraffin-embedded human lymph node tissue using IL-9R (Phospho-Ser519) antibody. The picture on the right is treated with the synthesized peptide.



Immunofluorescence analysis of HuvEc cells, using IL-9R (Phospho-Ser519) antibody. The picture on the right is treated with the synthesized peptide.