

Product datasheet for **TA314059**

IGFBP2 Rabbit Polyclonal Antibody

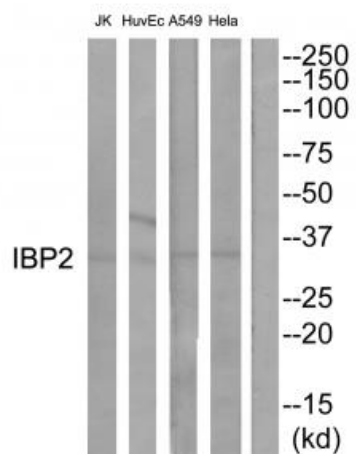
Product data:

Product Type:	Primary Antibodies
Applications:	WB
Recommended Dilution:	WB: 1:500~1:3000, ELISA: 1:40000
Reactivity:	Human, Mouse, Rat
Host:	Rabbit
Isotype:	IgG
Clonality:	Polyclonal
Immunogen:	The antiserum was produced against synthesized peptide derived from Internal of human IGFBP2.
Formulation:	Phosphate buffered saline (without Mg ²⁺ and Ca ²⁺), pH 7.4, 150mM NaCl, 0.02% sodium azide and 50% glycerol.
Concentration:	lot specific
Purification:	The antibody was affinity-purified from rabbit antiserum by affinity-chromatography using epitope-specific immunogen.
Conjugation:	Unconjugated
Storage:	Store at -20°C as received.
Stability:	Stable for 12 months from date of receipt.
Gene Name:	insulin like growth factor binding protein 2
Database Link:	NP_000588 Entrez Gene 16008 Mouse Entrez Gene 25662 Rat Entrez Gene 3485 Human P18065
Synonyms:	IBP2; IGF-BP53
Note:	IBP2 antibody detects endogenous levels of total IGFBP2 protein
Protein Families:	Adult stem cells, Druggable Genome, Embryonic stem cells, ES Cell Differentiation/IPS, Secreted Protein



[View online »](#)

Product images:



Western blot analysis of extracts from HeLa cells, A549 cells, HuvEc cells and JurKat cells, using IBP2 antibody. The lane on the right is treated with the synthesized peptide.