

Product datasheet for **TA314056**

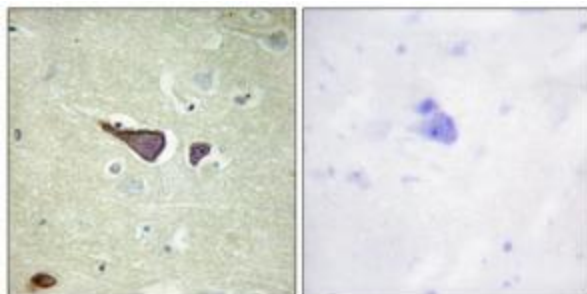
IGF2R Rabbit Polyclonal Antibody

Product data:

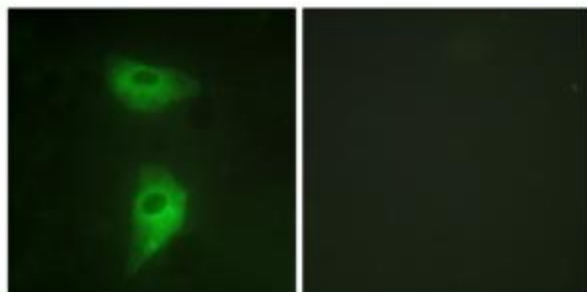
Product Type:	Primary Antibodies
Applications:	IF, IHC
Recommended Dilution:	IHC: 1:50~1:100, IF: 1:100~1:500, ELISA: 1:5000
Reactivity:	Human, Mouse
Host:	Rabbit
Isotype:	IgG
Clonality:	Polyclonal
Immunogen:	The antiserum was produced against synthesized peptide derived from Internal of human IGF2R.
Formulation:	Phosphate buffered saline (without Mg ²⁺ and Ca ²⁺), pH 7.4, 150mM NaCl, 0.02% sodium azide and 50% glycerol.
Concentration:	lot specific
Purification:	The antibody was affinity-purified from rabbit antiserum by affinity-chromatography using epitope-specific immunogen.
Conjugation:	Unconjugated
Storage:	Store at -20°C as received.
Stability:	Stable for 12 months from date of receipt.
Gene Name:	insulin like growth factor 2 receptor
Database Link:	NP_000867 Entrez Gene 16004 Mouse Entrez Gene 3482 Human P11717
Synonyms:	CD222; CIMPR; M6P-R; MPR1; MPRI
Note:	IGF2R antibody detects endogenous levels of total IGF2R protein.
Protein Families:	Druggable Genome, Transmembrane
Protein Pathways:	Lysosome



[View online »](#)

Product images:

Immunohistochemistry analysis of paraffin-embedded human brain tissue using IGF2R antibody. The picture on the right is treated with the synthesized peptide.



Immunofluorescence analysis of HeLa cells, using IGF2R antibody. The picture on the right is treated with the synthesized peptide.