

Product datasheet for **TA314051**

Factor I (CFI) Rabbit Polyclonal Antibody

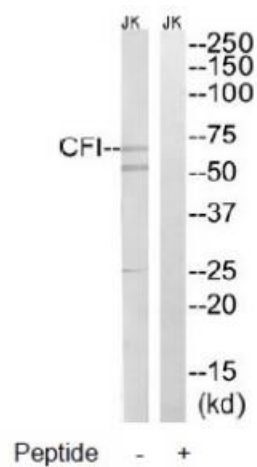
Product data:

Product Type:	Primary Antibodies
Applications:	WB
Recommended Dilution:	WB: 1:500~1:3000, IHC: 1:50~1:100, ELISA: 1:10000
Reactivity:	Human
Host:	Rabbit
Isotype:	IgG
Clonality:	Polyclonal
Immunogen:	The antiserum was produced against synthesized peptide derived from internal of human CFI.
Formulation:	Phosphate buffered saline (without Mg ²⁺ and Ca ²⁺), pH 7.4, 150mM NaCl, 0.02% sodium azide and 50% glycerol.
Concentration:	lot specific
Purification:	The antibody was affinity-purified from rabbit antiserum by affinity-chromatography using epitope-specific immunogen.
Conjugation:	Unconjugated
Storage:	Store at -20°C as received.
Stability:	Stable for 12 months from date of receipt.
Gene Name:	complement factor I
Database Link:	NP_000195 Entrez Gene 3426 Human P05156
Synonyms:	AHUS3; ARMD13; C3b-INA; C3BINA; FI; IF; KAF
Note:	CFI antibody detects endogenous levels of total CFI protein.
Protein Families:	Druggable Genome, Protease, Secreted Protein
Protein Pathways:	Complement and coagulation cascades



[View online »](#)

Product images:



Western blot analysis of extracts from Jurkat cells, using CFI antibody. The lane on the right is treated with the synthesized peptide.