

Product datasheet for **TA314049**

ICAM2 Rabbit Polyclonal Antibody

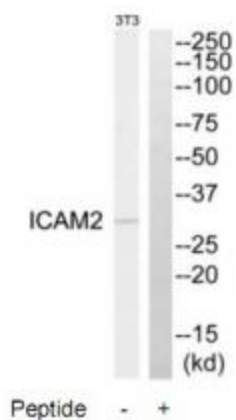
Product data:

Product Type:	Primary Antibodies
Applications:	WB
Recommended Dilution:	WB: 1:500~1:3000, ELISA: 1:10000
Reactivity:	Human
Host:	Rabbit
Isotype:	IgG
Clonality:	Polyclonal
Immunogen:	The antiserum was produced against synthesized peptide derived from internal of human ICAM2.
Formulation:	Phosphate buffered saline (without Mg ²⁺ and Ca ²⁺), pH 7.4, 150mM NaCl, 0.02% sodium azide and 50% glycerol.
Concentration:	lot specific
Purification:	The antibody was affinity-purified from rabbit antiserum by affinity-chromatography using epitope-specific immunogen.
Conjugation:	Unconjugated
Storage:	Store at -20°C as received.
Stability:	Stable for 12 months from date of receipt.
Gene Name:	intercellular adhesion molecule 2
Database Link:	NP_000864 Entrez Gene 3384 Human P13598
Synonyms:	CD102
Note:	ICAM2 antibody detects endogenous levels of total ICAM2 protein.
Protein Families:	ES Cell Differentiation/IPS, Transmembrane
Protein Pathways:	Cell adhesion molecules (CAMs), Natural killer cell mediated cytotoxicity



[View online »](#)

Product images:



Western blot analysis of extracts from NIH-3T3 cells, using ICAM2 antibody. The lane on the right is treated with the synthesized peptide.