

Product datasheet for **TA314045**

5HT5A receptor (HTR5A) Rabbit Polyclonal Antibody

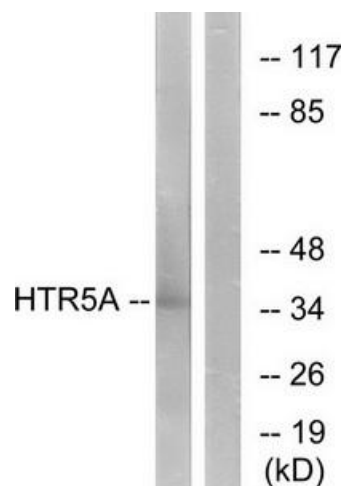
Product data:

Product Type:	Primary Antibodies
Applications:	IF, WB
Recommended Dilution:	WB: 1:500~1:3000, IF: 1:100~1:500, ELISA: 1:10000
Reactivity:	Human
Host:	Rabbit
Isotype:	IgG
Clonality:	Polyclonal
Immunogen:	The antiserum was produced against synthesized peptide derived from N-terminal of human HTR5A.
Formulation:	Phosphate buffered saline (without Mg ²⁺ and Ca ²⁺), pH 7.4, 150mM NaCl, 0.02% sodium azide and 50% glycerol.
Concentration:	lot specific
Purification:	The antibody was affinity-purified from rabbit antiserum by affinity-chromatography using epitope-specific immunogen.
Conjugation:	Unconjugated
Storage:	Store at -20°C as received.
Stability:	Stable for 12 months from date of receipt.
Gene Name:	5-hydroxytryptamine receptor 5A
Database Link:	NP_076917 Entrez Gene 3361 Human P47898
Synonyms:	5-HT5A
Note:	HTR5A antibody detects endogenous levels of total HTR5A protein.
Protein Families:	Druggable Genome, GPCR, Transmembrane
Protein Pathways:	Calcium signaling pathway, Neuroactive ligand-receptor interaction

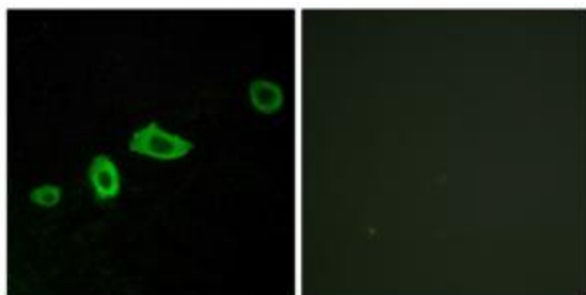


[View online »](#)

Product images:



Western blot analysis of extracts from Jurkat cells, using HTR5A antibody. The lane on the right is treated with the synthesized peptide.



Immunofluorescence analysis of LOVO cells, using HTR5A antibody. The picture on the right is treated with the synthesized peptide.