

## Product datasheet for **TA314042**

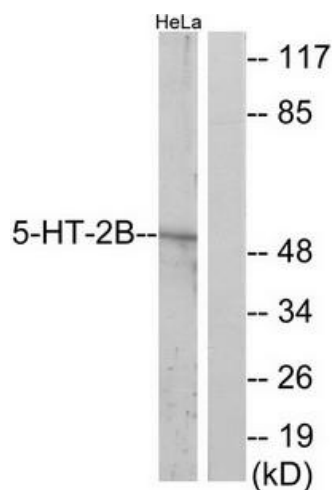
### HTR2B Rabbit Polyclonal Antibody

#### Product data:

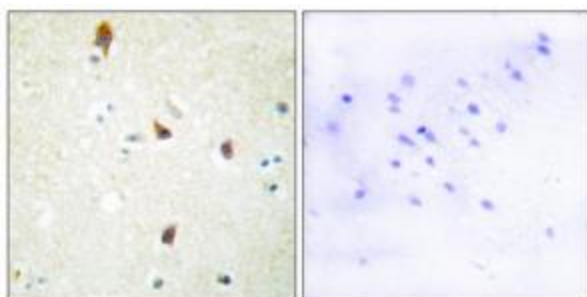
Product Type:	Primary Antibodies
Applications:	IF, IHC, WB
Recommended Dilution:	WB: 1:500~1:3000, IHC: 1:50~1:100, IF: 1:00~1:500, ELISA: 1:1000
Reactivity:	Human
Host:	Rabbit
Isotype:	IgG
Clonality:	Polyclonal
Immunogen:	The antiserum was produced against synthesized peptide derived from internal of human 5-HT-2B.
Formulation:	Phosphate buffered saline (without Mg <sup>2+</sup> and Ca <sup>2+</sup> ), pH 7.4, 150mM NaCl, 0.02% sodium azide and 50% glycerol.
Concentration:	lot specific
Purification:	The antibody was affinity-purified from rabbit antiserum by affinity-chromatography using epitope-specific immunogen.
Conjugation:	Unconjugated
Storage:	Store at -20°C as received.
Stability:	Stable for 12 months from date of receipt.
Gene Name:	5-hydroxytryptamine receptor 2B
Database Link:	<a href="#">NP_000858</a> <a href="#">Entrez Gene 3357 Human P41595</a>
Synonyms:	5-HT(2B); 5-HT2B
Note:	5-HT-2B antibody detects endogenous levels of total 5-HT-2B protein.
Protein Families:	Druggable Genome, Transmembrane
Protein Pathways:	Calcium signaling pathway, Gap junction, Neuroactive ligand-receptor interaction



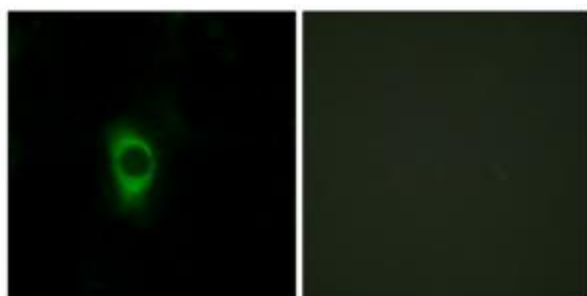
[View online »](#)

**Product images:**

Western blot analysis of extracts from HeLa cells, using 5-HT-2B antibody. The lane on the right is treated with the synthesized peptide.



Immunohistochemistry analysis of paraffin-embedded human brain tissue using 5-HT-2B antibody. The picture on the right is treated with the synthesized peptide.



Immunofluorescence analysis of HeLa cells, using 5-HT-2B antibody. The picture on the right is treated with the synthesized peptide.