

## Product datasheet for **TA314020**

### HNRNPD Rabbit Polyclonal Antibody

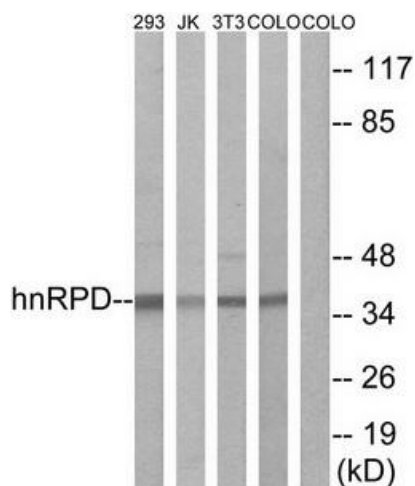
#### Product data:

Product Type:	Primary Antibodies
Applications:	IF, IHC, WB
Recommended Dilution:	WB: 1:500~1:3000, IHC: 1:50~1:100, IF: 1:100~1:500, ELISA: 1:20000
Reactivity:	Human, Mouse
Host:	Rabbit
Isotype:	IgG
Clonality:	Polyclonal
Immunogen:	The antiserum was produced against synthesized non-phosphopeptide derived from human hnRPD around the phosphorylation site of serine 83 (N-S-SP-P-R)
Formulation:	Phosphate buffered saline (without Mg <sup>2+</sup> and Ca <sup>2+</sup> ), pH 7.4, 150mM NaCl, 0.02% sodium azide and 50% glycerol.
Concentration:	lot specific
Purification:	The antibody was affinity-purified from rabbit antiserum by affinity-chromatography using epitope-specific immunogen.
Conjugation:	Unconjugated
Storage:	Store at -20°C as received.
Stability:	Stable for 12 months from date of receipt.
Gene Name:	heterogeneous nuclear ribonucleoprotein D
Database Link:	<a href="#">NP_001003810</a> <a href="#">Entrez Gene 11991 Mouse</a> <a href="#">Entrez Gene 3184 Human</a> <a href="#">Q14103</a>
Synonyms:	AUF1; AUF1A; hnRNPD0; HNRPD; P37
Note:	hnRPD (Ab-83) antibody detects endogenous levels of total hnRPD protein.
Protein Families:	Druggable Genome, Transcription Factors

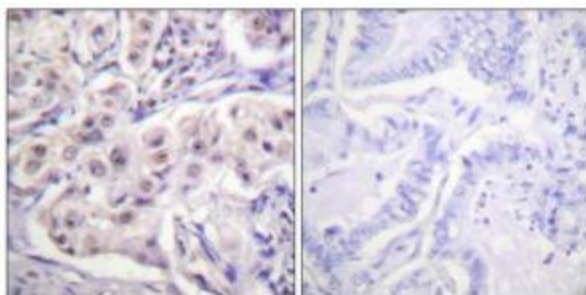


[View online »](#)

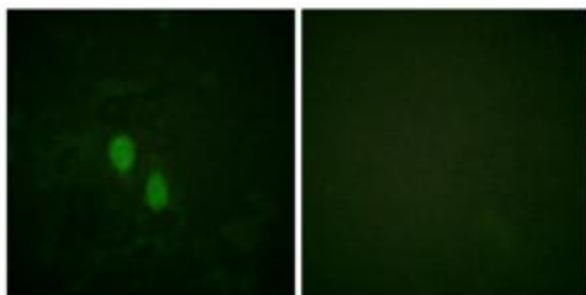
## Product images:



Western blot analysis of extracts from 293 cells, using hnRPD (Ab-83) antibody. The lane on the right is treated with the synthesized peptide.



Immunohistochemistry analysis of paraffin-embedded human lung carcinoma tissue using hnRPD (Ab-83) antibody. The picture on the right is treated with the synthesized peptide.



Immunofluorescence analysis of HeLa cells, using hnRPD (Ab-83) antibody. The picture on the right is treated with the synthesized peptide.