

Product datasheet for **TA314019**

hnRNP A2B1 (HNRNPA2B1) Rabbit Polyclonal Antibody

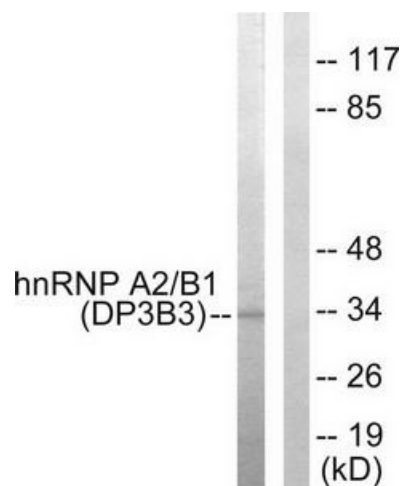
Product data:

Product Type:	Primary Antibodies
Applications:	IF, WB
Recommended Dilution:	WB: 1:500~1:3000, IF: 1:100~1:500, ELISA: 1:20000
Reactivity:	Human, Mouse
Host:	Rabbit
Isotype:	IgG
Clonality:	Polyclonal
Immunogen:	The antiserum was produced against synthesized peptide derived from N-terminal of human hnRNP A2/B1.
Formulation:	Phosphate buffered saline (without Mg ²⁺ and Ca ²⁺), pH 7.4, 150mM NaCl, 0.02% sodium azide and 50% glycerol.
Concentration:	lot specific
Purification:	The antibody was affinity-purified from rabbit antiserum by affinity-chromatography using epitope-specific immunogen.
Conjugation:	Unconjugated
Storage:	Store at -20°C as received.
Stability:	Stable for 12 months from date of receipt.
Gene Name:	heterogeneous nuclear ribonucleoprotein A2/B1
Database Link:	NP_002128 Entrez Gene 53379 Mouse Entrez Gene 3181 Human P22626
Synonyms:	HNRNPA2; HNRNPB1; HNRPA2; HNRPA2B1; HNRPB1; IBMPFD2; RNPA2; SNRPB1
Note:	hnRNP A2/B1 antibody detects endogenous levels of total hnRNP A2/B1 protein.
Protein Families:	Druggable Genome

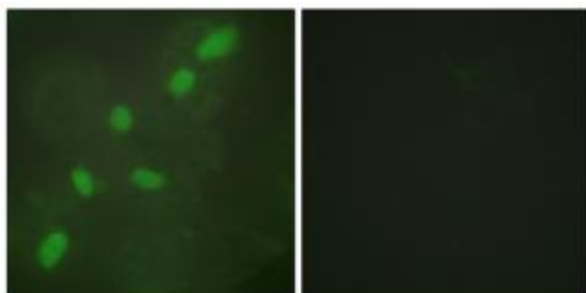


[View online »](#)

Product images:



Western blot analysis of extracts from HepG2 cells, using hnRNP A2/B1 antibody. The lane on the right is treated with the synthesized peptide.



Immunofluorescence analysis of HeLa cells, using hnRNP A2/B1 antibody. The picture on the right is treated with the synthesized peptide.