

Product datasheet for **TA314018**

hnRNP A1 (HNRNPA1) Rabbit Polyclonal Antibody

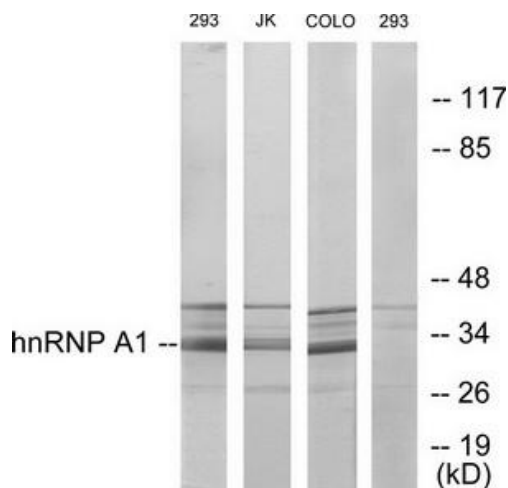
Product data:

Product Type:	Primary Antibodies
Applications:	IF, IHC, WB
Recommended Dilution:	WB: 1:500~1:3000, IHC: 1:50~1:100, IF: 1:100~1:500, ELISA: 1:20000
Reactivity:	Human, Mouse, Rat
Host:	Rabbit
Isotype:	IgG
Clonality:	Polyclonal
Immunogen:	The antiserum was produced against synthesized peptide derived from intrnal of human hnRNP A1.
Formulation:	Phosphate buffered saline (without Mg ²⁺ and Ca ²⁺), pH 7.4, 150mM NaCl, 0.02% sodium azide and 50% glycerol.
Concentration:	lot specific
Purification:	The antibody was affinity-purified from rabbit antiserum by affinity-chromatography using epitope-specific immunogen.
Conjugation:	Unconjugated
Storage:	Store at -20°C as received.
Stability:	Stable for 12 months from date of receipt.
Gene Name:	heterogeneous nuclear ribonucleoprotein A1
Database Link:	NP_002127 Entrez Gene 15382 Mouse Entrez Gene 29578 Rat Entrez Gene 3178 Human P09651
Synonyms:	ALS19; ALS20; hnRNP-A1; hnRNP A1; HNRPA1; HNRPA1L3; IBMPFD3; UP 1
Note:	hnRNP A1 antibody detects endogenous levels of total hnRNP A1 protein.
Protein Pathways:	Spliceosome

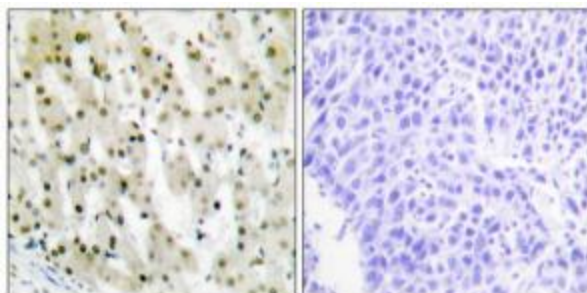


[View online »](#)

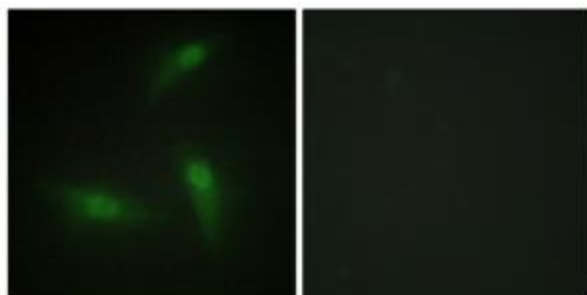
Product images:



Western blot analysis of extracts from 293 cells, Jurkat cells and COLO205 cells, using hnRNP A1 antibody. The lane on the right is treated with the synthesized peptide.



Immunohistochemistry analysis of paraffin-embedded human liver carcinoma tissue using hnRNP A1 antibody. The picture on the right is treated with the synthesized peptide.



Immunofluorescence analysis of HeLa cells, using hnRNP A1 antibody. The picture on the right is treated with the synthesized peptide.