

Product datasheet for **TA314017**

NUR77 (NR4A1) Rabbit Polyclonal Antibody

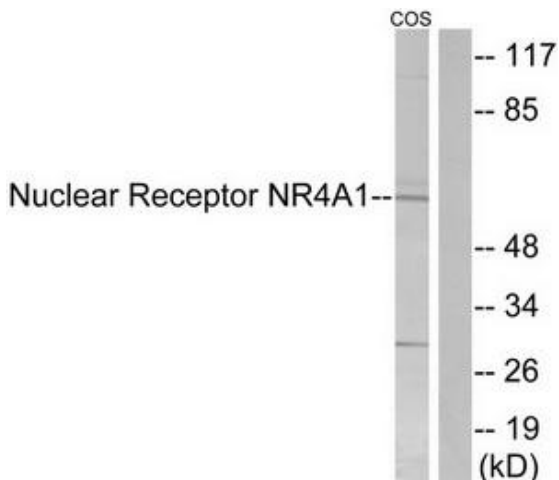
Product data:

| | |
|------------------------------|--|
| Product Type: | Primary Antibodies |
| Applications: | IHC, WB |
| Recommended Dilution: | WB: 1:500~1:3000, IHC: 1:50~1:100, ELISA: 1:10000 |
| Reactivity: | Human, Mouse, Rat |
| Host: | Rabbit |
| Isotype: | IgG |
| Clonality: | Polyclonal |
| Immunogen: | The antiserum was produced against synthesized non-phosphopeptide derived from human Nuclear Receptor NR4A1 around the phosphorylation site of serine 351 (L-P-SP-K-P). |
| Formulation: | Phosphate buffered saline (without Mg ²⁺ and Ca ²⁺), pH 7.4, 150mM NaCl, 0.02% sodium azide and 50% glycerol. |
| Concentration: | lot specific |
| Purification: | The antibody was affinity-purified from rabbit antiserum by affinity-chromatography using epitope-specific immunogen. |
| Conjugation: | Unconjugated |
| Storage: | Store at -20°C as received. |
| Stability: | Stable for 12 months from date of receipt. |
| Gene Name: | nuclear receptor subfamily 4 group A member 1 |
| Database Link: | NP_001189162 Entrez Gene 15370 Mouse Entrez Gene 79240 Rat Entrez Gene 3164 Human P22736 |
| Synonyms: | GFRP1; HMR; N10; NAK-1; NGFIB; NP10; NUR77; TR3 |
| Note: | Nuclear Receptor NR4A1 (Ab-351) antibody detects endogenous levels of total Nuclear Receptor NR4A1 protein. |
| Protein Families: | Druggable Genome, Nuclear Hormone Receptor, Transcription Factors |
| Protein Pathways: | MAPK signaling pathway |

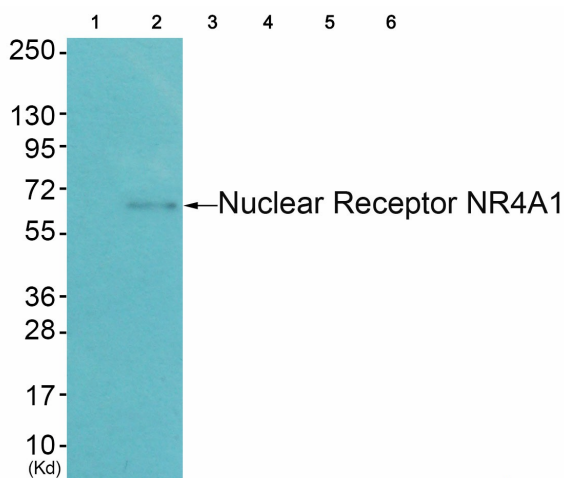


[View online »](#)

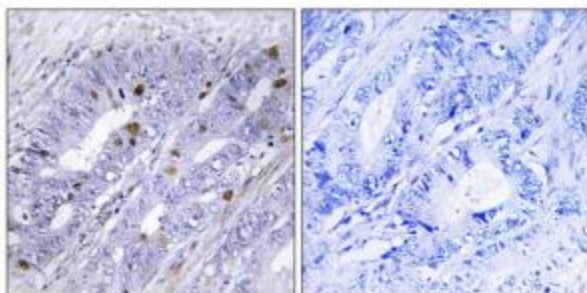
Product images:



Western blot analysis of extracts from COS-7 cells, using Nuclear Receptor NR4A1 (Ab-351) antibody. The lane on the right is treated with the synthesized peptide.



Western blot analysis of extracts from HepG2 cells (Lane 2), using Nuclear Receptor NR4A1 (Ab-351) Antibody. The lane on the left is treated with synthesized peptide.



Immunohistochemistry analysis of paraffin-embedded human colon carcinoma tissue using Nuclear Receptor NR4A1 (Ab-351) antibody. The picture on the right is treated with the synthesized peptide.