

Product datasheet for **TA314012**

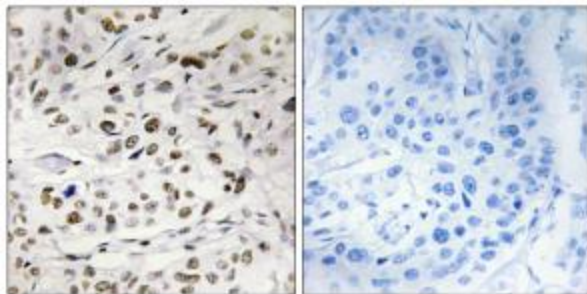
HMG14 (HMGN1) Rabbit Polyclonal Antibody

Product data:

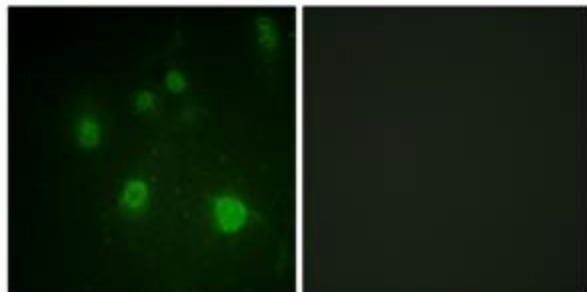
Product Type:	Primary Antibodies
Applications:	IF, IHC
Recommended Dilution:	IHC: 1:50~1:100, IF: 1:100~1:500, ELISA: 1:1000
Reactivity:	Human, Mouse, Rat
Modifications:	Phospho-specific
Host:	Rabbit
Isotype:	IgG
Clonality:	Polyclonal
Immunogen:	The antiserum was produced against synthesized phosphopeptide derived from human HMG14 around the phosphorylation site of serine 21 (R-R-SP-A-R).
Formulation:	Phosphate buffered saline (without Mg ²⁺ and Ca ²⁺), pH 7.4, 150mM NaCl, 0.02% sodium azide and 50% glycerol.
Concentration:	lot specific
Purification:	The antibody was affinity-purified from rabbit antiserum by affinity-chromatography using epitope-specific immunogen.
Conjugation:	Unconjugated
Storage:	Store at -20°C as received.
Stability:	Stable for 12 months from date of receipt.
Gene Name:	high mobility group nucleosome binding domain 1
Database Link:	NP_004956 Entrez Gene 15312 Mouse Entrez Gene 360704 Rat Entrez Gene 3150 Human P05114
Synonyms:	HMG14
Note:	HMG14 (Phospho-Ser21) antibody detects endogenous levels of HMG14 only when phosphorylated at serine 21.
Protein Families:	Transcription Factors



[View online »](#)

Product images:

Immunohistochemistry analysis of paraffin-embedded human breast carcinoma tissue, using HMG14 (Phospho-Ser21) antibody. The picture on the right is treated with the synthesized peptide.



Immunofluorescence analysis of COS7 cells, using HMG14 (Phospho-Ser21) antibody. The picture on the right is treated with the synthesized peptide.