

Product datasheet for **TA314008**

HLA DP (HLA-DPA1) Rabbit Polyclonal Antibody

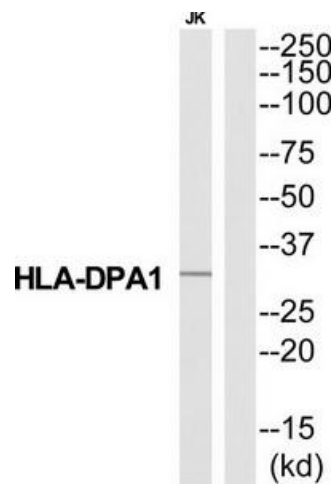
Product data:

Product Type:	Primary Antibodies
Applications:	WB
Recommended Dilution:	WB: 1:500~1:3000, ELISA: 1:40000
Reactivity:	Human
Host:	Rabbit
Isotype:	IgG
Clonality:	Polyclonal
Immunogen:	The antiserum was produced against synthesized peptide derived from N-terminal of human HA2Q.
Formulation:	Phosphate buffered saline (without Mg ²⁺ and Ca ²⁺), pH 7.4, 150mM NaCl, 0.02% sodium azide and 50% glycerol.
Concentration:	lot specific
Purification:	The antibody was affinity-purified from rabbit antiserum by affinity-chromatography using epitope-specific immunogen.
Conjugation:	Unconjugated
Storage:	Store at -20°C as received.
Stability:	Stable for 12 months from date of receipt.
Gene Name:	major histocompatibility complex, class II, DP alpha 1
Database Link:	NP_001229453 Entrez Gene 3113 Human P20036
Synonyms:	DP(W3); DP(W4); HLA-DP1A; HLADP; HLASB; PLT1
Note:	HA2Q antibody detects endogenous levels of total HA2Q protein.
Protein Families:	Transmembrane
Protein Pathways:	Allograft rejection, Antigen processing and presentation, Asthma, Autoimmune thyroid disease, Cell adhesion molecules (CAMs), Graft-versus-host disease, Systemic lupus erythematosus, Type I diabetes mellitus, Viral myocarditis



[View online »](#)

Product images:



Western blot analysis of extracts from Jurkat cells, using HA2Q antibody. The lane on the right is treated with the synthesized peptide.