

Product datasheet for **TA314004**

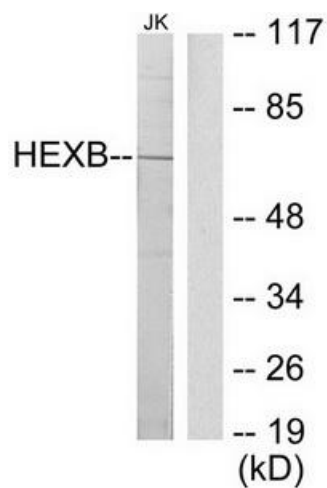
HEXB Rabbit Polyclonal Antibody

Product data:

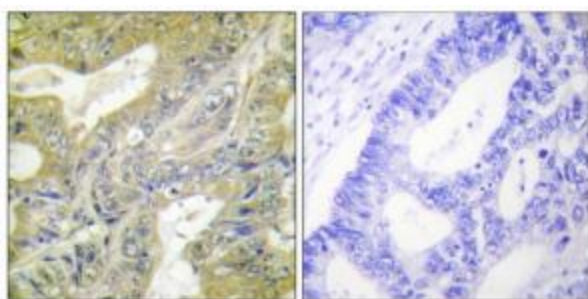
Product Type:	Primary Antibodies
Applications:	IHC, WB
Recommended Dilution:	WB: 1:500~1:3000, IHC: 1:50~1:100, ELISA: 1:20000
Reactivity:	Human
Host:	Rabbit
Isotype:	IgG
Clonality:	Polyclonal
Immunogen:	The antiserum was produced against synthesized peptide derived from C-terminal of human HEXB.
Formulation:	Phosphate buffered saline (without Mg ²⁺ and Ca ²⁺), pH 7.4, 150mM NaCl, 0.02% sodium azide and 50% glycerol.
Concentration:	lot specific
Purification:	The antibody was affinity-purified from rabbit antiserum by affinity-chromatography using epitope-specific immunogen.
Conjugation:	Unconjugated
Storage:	Store at -20°C as received.
Stability:	Stable for 12 months from date of receipt.
Gene Name:	hexosaminidase subunit beta
Database Link:	NP_000512 Entrez Gene 3074 Human P07686
Synonyms:	ENC-1AS; HEL-248
Note:	HEXB antibody detects endogenous levels of total HEXB protein.
Protein Families:	Druggable Genome, Transmembrane
Protein Pathways:	Amino sugar and nucleotide sugar metabolism, Glycosaminoglycan degradation, Glycosphingolipid biosynthesis - ganglio series, Glycosphingolipid biosynthesis - globo series, Lysosome, Metabolic pathways, Other glycan degradation



[View online »](#)

Product images:

Western blot analysis of extracts from Jurkat cells, using HEXB antibody. The lane on the right is treated with the synthesized peptide.



Immunohistochemistry analysis of paraffin-embedded human colon carcinoma tissue using HEXB antibody. The picture on the right is treated with the synthesized peptide.