

Product datasheet for **TA314002**

HCLS1 Rabbit Polyclonal Antibody

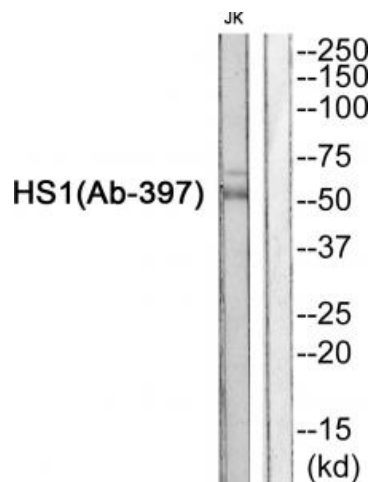
Product data:

Product Type:	Primary Antibodies
Applications:	WB
Recommended Dilution:	WB: 1:500~1:3000, ELISA: 1:20000
Reactivity:	Human
Host:	Rabbit
Isotype:	IgG
Clonality:	Polyclonal
Immunogen:	The antiserum was produced against synthesized peptide derived from C-terminal of human HCLS1.
Formulation:	Phosphate buffered saline (without Mg ²⁺ and Ca ²⁺), pH 7.4, 150mM NaCl, 0.02% sodium azide and 50% glycerol.
Concentration:	lot specific
Purification:	The antibody was affinity-purified from rabbit antiserum by affinity-chromatography using epitope-specific immunogen.
Conjugation:	Unconjugated
Storage:	Store at -20°C as received.
Stability:	Stable for 12 months from date of receipt.
Gene Name:	hematopoietic cell-specific Lyn substrate 1
Database Link:	NP_005326 Entrez Gene 3059 Human P14317
Synonyms:	CTTNL; HS1; lckBP1; p75
Note:	HS1 (Ab-397)antibody detects endogenous levels of total HCLS1 protein.
Protein Families:	Transcription Factors
Protein Pathways:	Pathogenic Escherichia coli infection, Tight junction

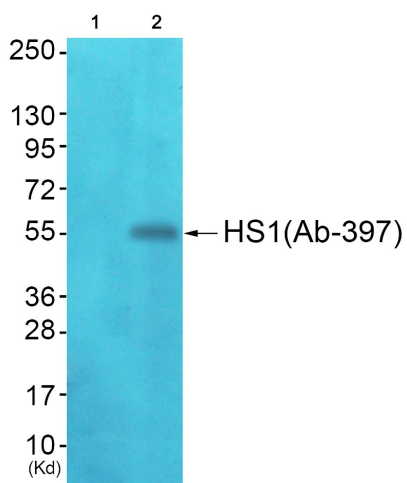


[View online »](#)

Product images:



Western blot analysis of extracts from JurKat cells, using HS1 (Ab-397)antibody. The lane on the right is treated with the synthesized peptide.



Western blot analysis of extracts from JK cells (Lane 2), using HS1 (Ab-397) Antibody. The lane on the left is treated with synthesized peptide.