

Product datasheet for **TA313999**

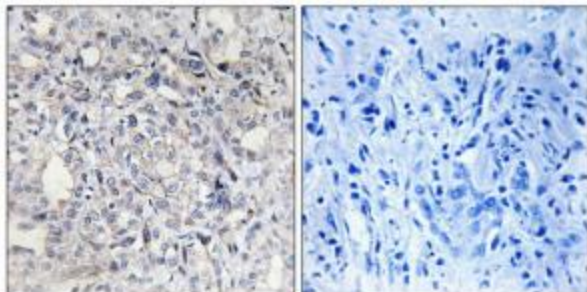
Heparin Cofactor II (SERPIND1) Rabbit Polyclonal Antibody

Product data:

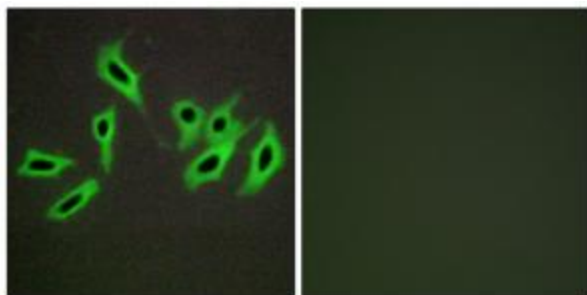
Product Type:	Primary Antibodies
Applications:	IF, IHC
Recommended Dilution:	IHC: 1:50~1:100, IF: 1:100~1:500, ELISA: 1:5000
Reactivity:	Human, Mouse, Rat
Host:	Rabbit
Isotype:	IgG
Clonality:	Polyclonal
Immunogen:	The antiserum was produced against synthesized peptide derived from internal of human Heparin Cofactor II.
Formulation:	Phosphate buffered saline (without Mg ²⁺ and Ca ²⁺), pH 7.4, 150mM NaCl, 0.02% sodium azide and 50% glycerol.
Concentration:	lot specific
Purification:	The antibody was affinity-purified from rabbit antiserum by affinity-chromatography using epitope-specific immunogen.
Conjugation:	Unconjugated
Storage:	Store at -20°C as received.
Stability:	Stable for 12 months from date of receipt.
Gene Name:	serpin family D member 1
Database Link:	NP_000176 Entrez Gene 15160 Mouse Entrez Gene 79224 Rat Entrez Gene 3053 Human P05546
Synonyms:	D22S673; HC2; HCF2; HCII; HLS2; LS2; THPH10
Note:	Heparin Cofactor II antibody detects endogenous levels of total Heparin Cofactor II protein.
Protein Families:	Druggable Genome
Protein Pathways:	Complement and coagulation cascades



[View online »](#)

Product images:

Immunohistochemistry analysis of paraffin-embedded human liver carcinoma tissue, using Heparin Cofactor II antibody. The picture on the right is treated with the synthesized peptide.



Immunofluorescence analysis of HepG2 cells, using Heparin Cofactor II antibody. The picture on the right is treated with the synthesized peptide.