

Product datasheet for **TA313998**

HCCS Rabbit Polyclonal Antibody

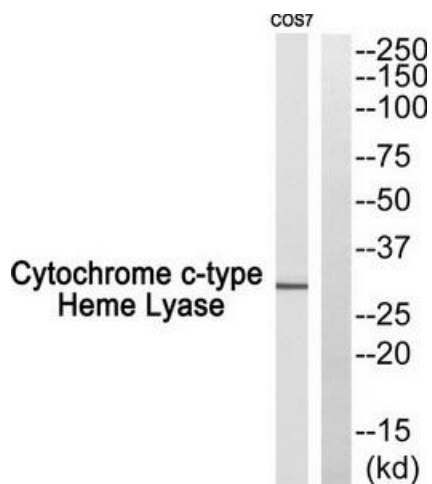
Product data:

Product Type:	Primary Antibodies
Applications:	IF, IHC, WB
Recommended Dilution:	WB: 1:500~1:3000, IHC: 1:50~1:100, IF: 1:100~1:500, ELISA: 1:20000
Reactivity:	Human, Mouse
Host:	Rabbit
Isotype:	IgG
Clonality:	Polyclonal
Immunogen:	The antiserum was produced against synthesized peptide derived from internal of human CCHL.
Formulation:	Phosphate buffered saline (without Mg ²⁺ and Ca ²⁺), pH 7.4, 150mM NaCl, 0.02% sodium azide and 50% glycerol.
Concentration:	lot specific
Purification:	The antibody was affinity-purified from rabbit antiserum by affinity-chromatography using epitope-specific immunogen.
Conjugation:	Unconjugated
Storage:	Store at -20°C as received.
Stability:	Stable for 12 months from date of receipt.
Gene Name:	holocytochrome c synthase
Database Link:	NP_001116080 Entrez Gene 15159 Mouse Entrez Gene 3052 Human P53701
Synonyms:	CCHL; MCOPS7; MLS
Note:	Cytochrome c-type Heme Lyase antibody detects endogenous levels of total CCHL protein.
Protein Pathways:	Porphyrim and chlorophyll metabolism

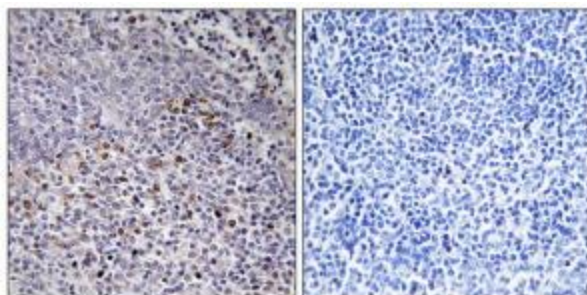


[View online »](#)

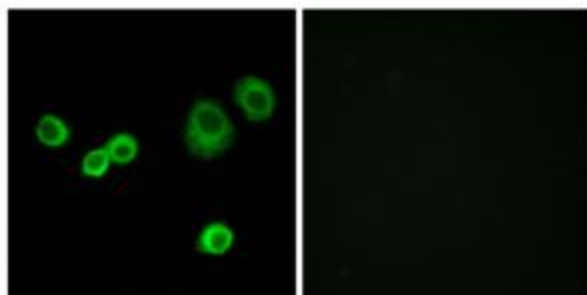
Product images:



Western blot analysis of extracts from HeLa cells, HepG2 cells and COLO cells, using Cytochrome c-type Heme Lyase antibody. The lane on the right is treated with the synthesized peptide.



Immunohistochemistry analysis of paraffin-embedded human tonsil tissue using Cytochrome c-type Heme Lyase antibody. The picture on the right is treated with the synthesized peptide.



Immunofluorescence analysis of MCF-7 cells, using Cytochrome c-type Heme Lyase antibody. The picture on the right is treated with the synthesized peptide.