

Product datasheet for **TA313996**

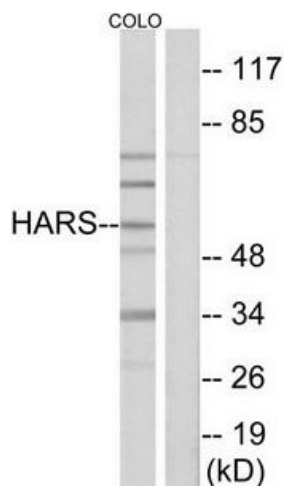
HARS1 Rabbit Polyclonal Antibody

Product data:

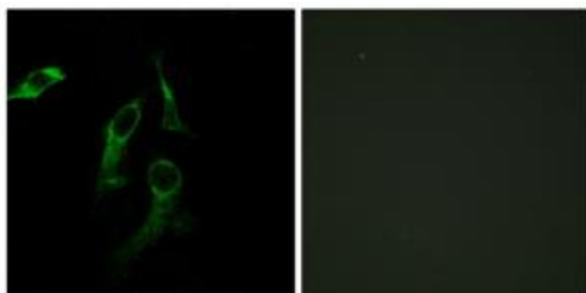
Product Type:	Primary Antibodies
Applications:	IF, WB
Recommended Dilution:	WB: 1:500~1:3000, IF: 1:100~1:500, ELISA: 1:20000
Reactivity:	Human, Mouse
Host:	Rabbit
Isotype:	IgG
Clonality:	Polyclonal
Immunogen:	The antiserum was produced against synthesized peptide derived from C-terminal of human HARS.
Formulation:	Phosphate buffered saline (without Mg ²⁺ and Ca ²⁺), pH 7.4, 150mM NaCl, 0.02% sodium azide and 50% glycerol.
Concentration:	lot specific
Purification:	The antibody was affinity-purified from rabbit antiserum by affinity-chromatography using epitope-specific immunogen.
Conjugation:	Unconjugated
Storage:	Store at -20°C as received.
Stability:	Stable for 12 months from date of receipt.
Gene Name:	histidyl-tRNA synthetase
Database Link:	NP_002100 Entrez Gene 15115 Mouse Entrez Gene 3035 Human P12081
Synonyms:	CMT2W; HRS; USH3B
Note:	HARS antibody detects endogenous levels of total HARS protein.
Protein Pathways:	Aminoacyl-tRNA biosynthesis



[View online »](#)

Product images:


Western blot analysis of extracts from HeLa cells, using HARS antibody. The lane on the right is treated with the synthesized peptide.



Immunofluorescence analysis of HepG2 cells, using HARS antibody. The picture on the right is treated with the synthesized peptide.