

Product datasheet for **TA313990**

Granzyme H (GZMH) Rabbit Polyclonal Antibody

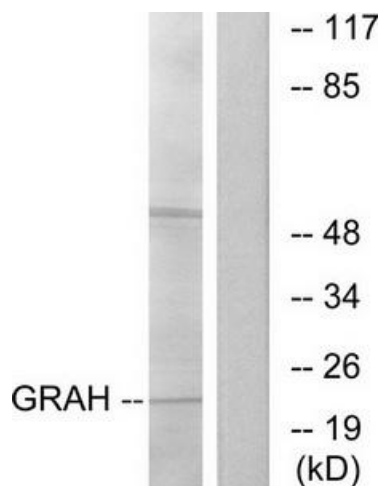
Product data:

Product Type:	Primary Antibodies
Applications:	IF, WB
Recommended Dilution:	WB: 1:500~1:3000, IF: 1:100~1:500, ELISA: 1:5000
Reactivity:	Human
Host:	Rabbit
Isotype:	IgG
Clonality:	Polyclonal
Immunogen:	The antiserum was produced against synthesized peptide derived from internal of human GRAH.
Formulation:	Phosphate buffered saline (without Mg ²⁺ and Ca ²⁺), pH 7.4, 150mM NaCl, 0.02% sodium azide and 50% glycerol.
Concentration:	lot specific
Purification:	The antibody was affinity-purified from rabbit antiserum by affinity-chromatography using epitope-specific immunogen.
Conjugation:	Unconjugated
Storage:	Store at -20°C as received.
Stability:	Stable for 12 months from date of receipt.
Gene Name:	granzyme H
Database Link:	NP_219491 Entrez Gene 2999 Human P20718
Synonyms:	CCP-X; CGL-2; CSP-C; CTLA1; CTSL2
Note:	GRAH antibody detects endogenous levels of total GRAH protein.
Protein Families:	Druggable Genome, Protease

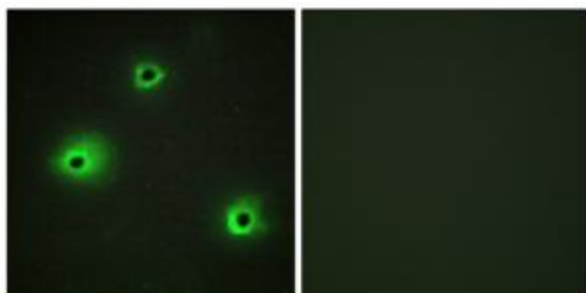


[View online »](#)

Product images:



Western blot analysis of extracts from K562 cells, using GRAH antibody. The lane on the right is treated with the synthesized peptide.



Immunofluorescence analysis of A549 cells, using GRAH antibody. The picture on the right is treated with the synthesized peptide.