

Product datasheet for **TA313989**

beta glucuronidase (GUSB) Rabbit Polyclonal Antibody

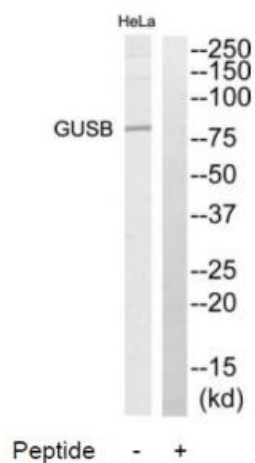
Product data:

Product Type:	Primary Antibodies
Applications:	WB
Recommended Dilution:	WB: 1:500~1:3000, ELISA: 1:10000
Reactivity:	Human, Mouse, Rat
Host:	Rabbit
Isotype:	IgG
Clonality:	Polyclonal
Immunogen:	The antiserum was produced against synthesized peptide derived from internal of human GUSB.
Formulation:	Phosphate buffered saline (without Mg ²⁺ and Ca ²⁺), pH 7.4, 150mM NaCl, 0.02% sodium azide and 50% glycerol.
Concentration:	lot specific
Purification:	The antibody was affinity-purified from rabbit antiserum by affinity-chromatography using epitope-specific immunogen.
Conjugation:	Unconjugated
Storage:	Store at -20°C as received.
Stability:	Stable for 12 months from date of receipt.
Gene Name:	glucuronidase beta
Database Link:	NP_000172 Entrez Gene 24434 Rat Entrez Gene 110006 Mouse Entrez Gene 2990 Human P08236
Synonyms:	BG; MPS7
Note:	GUSB antibody detects endogenous levels of total GUSB protein.
Protein Families:	Druggable Genome, Transmembrane
Protein Pathways:	Drug metabolism - other enzymes, Glycosaminoglycan degradation, Lysosome, Metabolic pathways, Pentose and glucuronate interconversions, Porphyrin and chlorophyll metabolism, Starch and sucrose metabolism



[View online »](#)

Product images:



Western blot analysis of extracts from HeLa cells, using GUSB antibody. The lane on the right is treated with the synthesized peptide.