

## Product datasheet for **TA313988**

### **GUCY1B1 Rabbit Polyclonal Antibody**

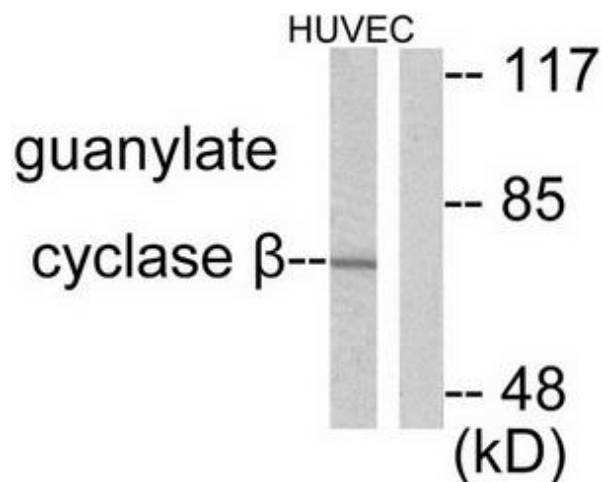
#### **Product data:**

<b>Product Type:</b>	Primary Antibodies
<b>Applications:</b>	IHC, WB
<b>Recommended Dilution:</b>	WB: 1:500~1:3000, IHC: 1:50~1:100, ELISA: 1:5000
<b>Reactivity:</b>	Human, Mouse, Rat
<b>Host:</b>	Rabbit
<b>Isotype:</b>	IgG
<b>Clonality:</b>	Polyclonal
<b>Immunogen:</b>	The antiserum was produced against synthesized peptide derived from human Guanylate Cyclase $\beta$ .
<b>Formulation:</b>	Phosphate buffered saline (without Mg <sup>2+</sup> and Ca <sup>2+</sup> ), pH 7.4, 150mM NaCl, 0.02% sodium azide and 50% glycerol.
<b>Concentration:</b>	lot specific
<b>Purification:</b>	The antibody was affinity-purified from rabbit antiserum by affinity-chromatography using epitope-specific immunogen.
<b>Conjugation:</b>	Unconjugated
<b>Storage:</b>	Store at -20°C as received.
<b>Stability:</b>	Stable for 12 months from date of receipt.
<b>Gene Name:</b>	guanylate cyclase 1, soluble, beta 3
<b>Database Link:</b>	<a href="#">NP_000848</a> <a href="#">Entrez Gene 25202 Rat</a> <a href="#">Entrez Gene 54195 Mouse</a> <a href="#">Entrez Gene 2983 Human</a> <a href="#">Q02153</a>
<b>Synonyms:</b>	GC-S-beta-1; GC-SB3; GUC1B3; GUCB3; GUCSB3; GUCY1B1
<b>Note:</b>	Guanylate Cyclase . antibody detects endogenous levels of total Guanylate Cyclase . protein.
<b>Protein Families:</b>	Druggable Genome
<b>Protein Pathways:</b>	Gap junction, Long-term depression, Purine metabolism, Vascular smooth muscle contraction

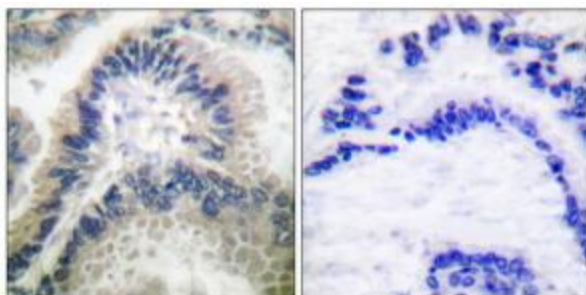


[View online »](#)

## Product images:



Western blot analysis of extracts from HuvEc cells, using Guanylate Cyclase  $\beta$  antibody (#TA313988). The lane on the right is treated with the synthesized peptide.



Immunohistochemical analysis of paraffin-embedded human lung carcinoma tissue using Guanylate Cyclase  $\beta$  antibody (#TA313988). The picture on the right is treated with the synthesized peptide.