

Product datasheet for **TA313986**

BRF1 Rabbit Polyclonal Antibody

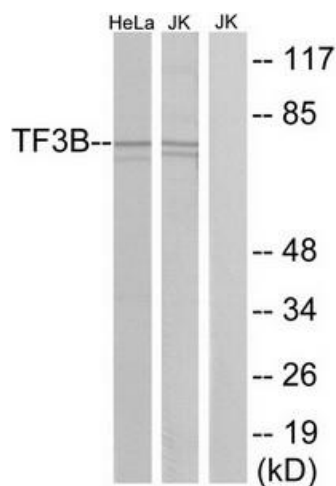
Product data:

Product Type:	Primary Antibodies
Applications:	IF, IHC, WB
Recommended Dilution:	WB: 1:500~1:3000, IHC: 1:50~1:100, IF: 1:100~1:500, ELISA: 1:1000
Reactivity:	Human, Mouse
Host:	Rabbit
Isotype:	IgG
Clonality:	Polyclonal
Immunogen:	The antiserum was produced against synthesized peptide derived from internal of human TF3B
Formulation:	Phosphate buffered saline (without Mg ²⁺ and Ca ²⁺), pH 7.4, 150mM NaCl, 0.02% sodium azide and 50% glycerol.
Concentration:	lot specific
Purification:	The antibody was affinity-purified from rabbit antiserum by affinity-chromatography using epitope-specific immunogen.
Conjugation:	Unconjugated
Storage:	Store at -20°C as received.
Stability:	Stable for 12 months from date of receipt.
Gene Name:	BRF1, RNA polymerase III transcription initiation factor 90 kDa subunit
Database Link:	NP_663734 Entrez Gene 72308 Mouse Entrez Gene 2972 Human Q92994
Synonyms:	BRF; FLJ42674; GTF3B; hBRF; MGC105048; TAF3B2; TAF3C; TAFIII90; TF3B90; TFIIIB90
Note:	TF3B antibody detects endogenous levels of total TF3B protein.
Protein Families:	Transcription Factors

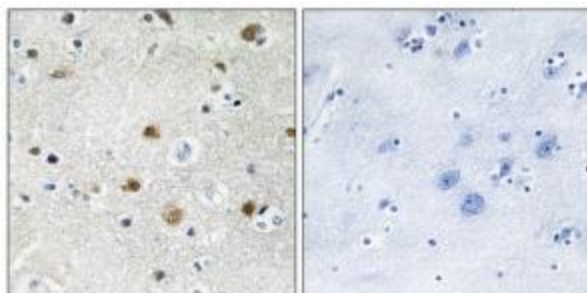


[View online »](#)

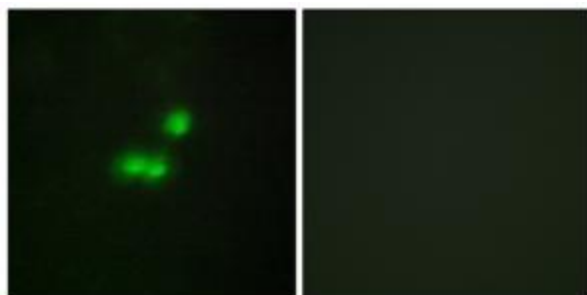
Product images:



Western blot analysis of extracts from HeLa cells and Jurkat cells, using TF3B antibody. The lane on the right is treated with the synthesized peptide.



Immunohistochemistry analysis of paraffin-embedded human brain tissue using TF3B antibody. The picture on the right is treated with the synthesized peptide.



Immunofluorescence analysis of MCF-7 cells, using TF3B antibody. The picture on the right is treated with the synthesized peptide.