

Product datasheet for **TA313984**

GTF2H2 Rabbit Polyclonal Antibody

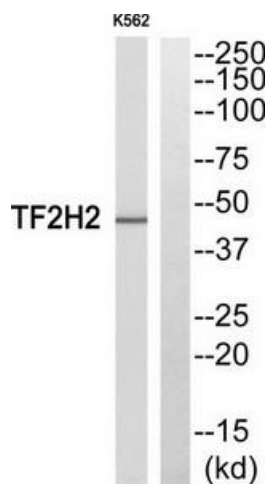
Product data:

Product Type:	Primary Antibodies
Applications:	WB
Recommended Dilution:	WB: 1:500~1:3000, ELISA: 1:40000
Reactivity:	Human, Mouse, Rat
Host:	Rabbit
Isotype:	IgG
Clonality:	Polyclonal
Immunogen:	The antiserum was produced against synthesized peptide derived from N-terminal of human TF2H2.
Formulation:	Phosphate buffered saline (without Mg ²⁺ and Ca ²⁺), pH 7.4, 150mM NaCl, 0.02% sodium azide and 50% glycerol.
Concentration:	lot specific
Purification:	The antibody was affinity-purified from rabbit antiserum by affinity-chromatography using epitope-specific immunogen.
Conjugation:	Unconjugated
Storage:	Store at -20°C as received.
Stability:	Stable for 12 months from date of receipt.
Gene Name:	general transcription factor IIH subunit 2
Database Link:	NP_001506 Entrez Gene 23894 MouseEntrez Gene 294693 RatEntrez Gene 2966 Human Q13888
Synonyms:	BTF2; BTF2P44; p44; T-BTF2P44; TFIIH
Note:	TF2H2 antibody detects endogenous levels of total TF2H2 protein.
Protein Families:	Druggable Genome, Stem cell - Pluripotency, Transcription Factors
Protein Pathways:	Basal transcription factors, Nucleotide excision repair



[View online »](#)

Product images:



Western blot analysis of extracts from COLO205 cells, using TF2H2 antibody. The lane on the right is treated with the synthesized peptide.