

Product datasheet for **TA313982**

TFIIE beta (GTF2E2) Rabbit Polyclonal Antibody

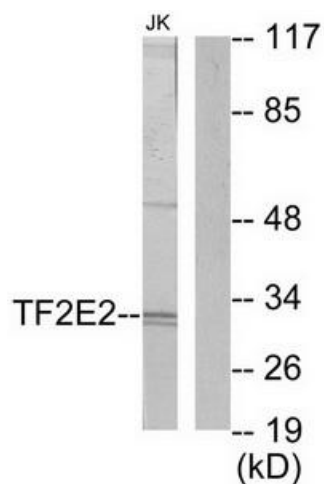
Product data:

Product Type:	Primary Antibodies
Applications:	IHC, WB
Recommended Dilution:	WB: 1:500~1:3000, IHC: 1:50~1:100, ELISA: 1:20000
Reactivity:	Human, Mouse
Host:	Rabbit
Isotype:	IgG
Clonality:	Polyclonal
Immunogen:	The antiserum was produced against synthesized peptide derived from internal of human TF2E2.
Formulation:	Phosphate buffered saline (without Mg ²⁺ and Ca ²⁺), pH 7.4, 150mM NaCl, 0.02% sodium azide and 50% glycerol.
Concentration:	lot specific
Purification:	The antibody was affinity-purified from rabbit antiserum by affinity-chromatography using epitope-specific immunogen.
Conjugation:	Unconjugated
Storage:	Store at -20°C as received.
Stability:	Stable for 12 months from date of receipt.
Gene Name:	general transcription factor IIE subunit 2
Database Link:	NP_002086 Entrez Gene 68153 Mouse Entrez Gene 2961 Human P29084
Synonyms:	FE; TF2E2; TFIIE-B
Note:	TF2E2 antibody detects endogenous levels of total TF2E2 protein.
Protein Families:	Transcription Factors
Protein Pathways:	Basal transcription factors

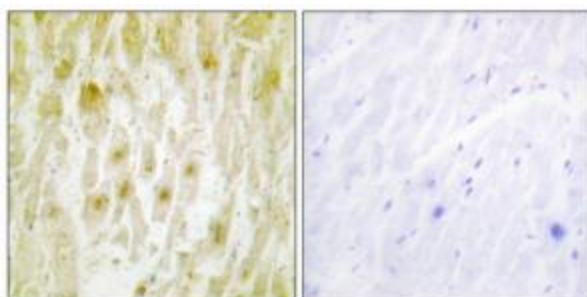


[View online »](#)

Product images:



Western blot analysis of extracts from Jurkat cells, using TF2E2 antibody. The lane on the right is treated with the synthesized peptide.



Immunohistochemistry analysis of paraffin-embedded human heart tissue using TF2E2 antibody. The picture on the right is treated with the synthesized peptide.