

## Product datasheet for **TA313979**

### MSH6 Rabbit Polyclonal Antibody

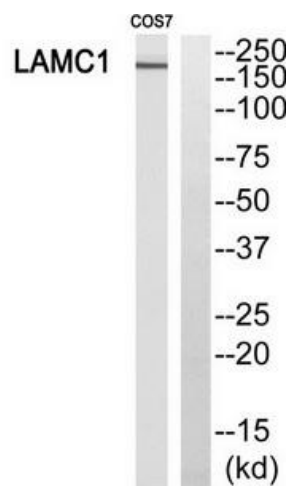
#### Product data:

Product Type:	Primary Antibodies
Applications:	WB
Recommended Dilution:	WB: 1:500~1:3000, ELISA: 1:20000
Reactivity:	Human, Mouse
Host:	Rabbit
Isotype:	IgG
Clonality:	Polyclonal
Immunogen:	The antiserum was produced against synthesized peptide derived from internal of human MSH6.
Formulation:	Phosphate buffered saline (without Mg <sup>2+</sup> and Ca <sup>2+</sup> ), pH 7.4, 150mM NaCl, 0.02% sodium azide and 50% glycerol.
Concentration:	lot specific
Purification:	The antibody was affinity-purified from rabbit antiserum by affinity-chromatography using epitope-specific immunogen.
Conjugation:	Unconjugated
Storage:	Store at -20°C as received.
Stability:	Stable for 12 months from date of receipt.
Gene Name:	mutS homolog 6
Database Link:	<a href="#">NP_000170</a> <a href="#">Entrez Gene 17688 Mouse</a> <a href="#">Entrez Gene 2956 Human</a> <a href="#">P52701</a>
Synonyms:	GTBP; GTMBP; HNPCC5; HSAP; p160
Note:	MSH6 antibody detects endogenous levels of total MSH6 protein.
Protein Families:	Druggable Genome, Stem cell - Pluripotency
Protein Pathways:	Colorectal cancer, Mismatch repair, Pathways in cancer



[View online »](#)

## Product images:



Western blot analysis of extracts from HUVEC cells, using MSH6 antibody. The lane on the right is treated with the synthesized peptide.